

# ORCA<sup>®</sup>

CONNECTING THE WORLD



[www.orcasystem.com](http://www.orcasystem.com)



CONNECTING THE WORLD

## *About Company*

The **ORCA System** represent a complete offering with an exceptional performance, reliability and support, manufactured to European quality standard.

The **ORCA Products** constitute an end to end solution where performance, ease of installation and cost effectiveness are prerequisites.

**ORCA** is the complete standards compliant, high quality passive cabling solutions. The incredible rise of the brand reflects a growing demand for an affordable reliable standards-compliant solution. ORCA offers a complete range of easy-to-specify, easy-to-install copper and optical cabling solutions, and networking enclosure products on the market.



COMPANY PROFILE - ORCA



CONNECTING THE WORLD

## *Products and Solutions*

With a focus on government, education, telecom, and commercial installations, **ORCA solution** is a growing force in Italy and European networking environs. Our portfolio including patch panels, patch cords, outlets, key stones and workstation components for CAT. 5E, CAT.6, CAT.7, media converters and fiber optic cabling system ad outside plant telecom products.

## *Why becoming an Orca's partner?*

There are many advantages to becoming an ORCA Cabling Partner including:

- Customized products
- Literature support
- Technical training
- Free technical support



COMPANY PROFILE - ORCA



CONNECTING THE WORLD

<b>FIBER SYSTEM</b>	<b>8</b>
Universal Loose Tube Cables	8
CST Armoured Cable	9
Fiber Optics Drawer	10
Fiber Optic Wall Box	12
Epoxy Lc Style Fiber Connector	13
Epoxy SC Style Fiber Connector	13
Epoxy ST Style Fiber Connector	14
Fiber Adapter	14
Attenuators	15
Fiber Patch Cord SC-SC Duplex	16
Fiber Patch Cord ST-ST Duplex	17
Fiber Patch Cord SC-ST Duplex	19
Fiber Patch Cord MT-RJ Duplex	20
Fiber Patch Cord LC Duplex	22
Fiber Patch Cord LC-ST Duplex	23
Fiber Patch Cord LC-SC Duplex	24
High Crush Resistance Fiber Patch Cord	25
MPO Optical Fiber cassettes	26
MPO Trunk Cable	27
Fiber Multimode Pigtail	28



CONNECTING THE WORLD

Fiber Singlemode Pigtail	29
Optical Fiber Accessories	30
Optical Fiber Tools	31
<b>COPPER SYSTEM</b>	<b>33</b>
Telephone Copper System	33
Stranded Lan Cable	34
Telephone Cable	35
Internal Telephone Wire	35
External Telephone Wire	36
Voice Telephone Products	37
Category 5E RJ45 insert	38
Category 5E Patch Panels	39
Category 5E UTP Cable	40
Category 5E FTP Cable	40
Category 6 RJ45 insert	41
Category 6 Patch Panels	41
Category 6 UTP Cable	42
Category 6 FTP Cable	43
Category 5E UTP Cable double sheath for outdoor use	43
Data Cabling Accessories	44
Cat.3 Patch Cords RJ45-RJ45	45



CONNECTING THE WORLD

Cat5E Patch Cords RJ45-XC	46
UTP and FTP Cat.5E Patch Cords RJ45-RJ45	46
UTP And FTP Cat.6 Patch Cords RJ45-RJ45	48
Modular Plugs	49
Tooling	50
<b>ACCESSORIES</b>	<b>54</b>
Faceplate	54
Wall box for faceplate	54
Electrical line adapter series	55
Splitter and Adapter F/F	56
Utilities	57
Tie wraps	57
<b>LAN EQUIPMENT</b>	<b>58</b>
Mini Media Converter	58
Gigabit Media Converter	59
<b>SECURITY CCTV</b>	<b>60</b>
Digital Video Recorder	60
DVR accessories	61
CCTV Coaxial Cable and connectors	61
Tooling	62
UTP Video Balun System	62



CONNECTING THE WORLD

CCD Day & Night Outdoor Weatherproof IR Camera	63
CCD Dome Camera for internal with audio	64

# Fiber System

## Universal Loose Tube Cables



A wide range of fibers is offered to suit everyone's individual needs. Available in multimode and single mode, loose or tight and steel armored, for indoor or outdoor use. All fibers are sheathed with Low Smoke Zero Halogen (LSZH) jacket. All the fibers specifications meet ISO 11801 and TIA/EIA B requirements.

### Features

- Compact construction
- Rodent resistant
- Non-metallic composition makes it lighter and easy to install
- Longitudinal and lateral water-blocking
- Fiber colors coded according to TIA/EIA-598
- Suitable for direct burial
- Crush resistance: 2000 N/10 cm
- Temperature - min/max range transport/storage: -20°C to +70°C installation: 0°C to +50°C operation: -20°C to +60°C
- Available in LDPE outer jackets

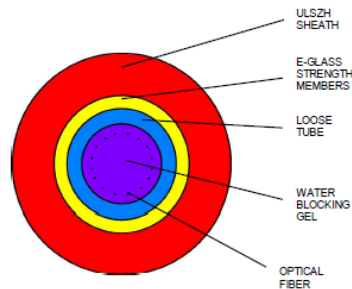


Part Number	Description	Color	Type
111111-04	Optical cable Loose int/est antirodent 4 fibre 50/125um LSZH	Orange	OM2
111114-04	Optical cable Loose int/est antirodent 4 fibre 50/125um OM3 LSZH	Acqua	OM3
111112-04	Optical cable Loose int/est antirodent 4 fibre 62,5/125um LSZH	Grey	OM1
111113-04	Optical cable Loose int/est antirodent 4 fibre 09/125um LSZH	Yellow	OS1
111111-06	Optical cable Loose int/est antirodent 6 fibre 50/125um LSZH	Orange	OM2
111114-06	Optical cable Loose int/est antirodent 6 fibre 50/125um OM3 LSZH	Acqua	OM3
111112-06	Optical cable Loose int/est antirodent 6 fibre 62,5/125um LSZH	Grey	OM1
111113-06	Optical cable Loose int/est antirodent 6 fibre 09/125um LSZH	Yellow	OS1
111111-08	Optical cable Loose int/est antirodent 8 fibre 50/125um LSZH	Orange	OM2
111114-08	Optical cable Loose int/est antirodent 8 fibre 50/125um OM3 LSZH	Acqua	OM3
111112-08	Optical cable Loose int/est antirodent 8 fibre 62,5/125um LSZH	Grey	OM1
111113-08	Optical cable Loose int/est antirodent 8 fibre 09/125um LSZH	Yellow	OS1
111111-12	Optical cable Loose int/est antirodent 12 fibre 50/125um LSZH	Orange	OM2
111114-12	Optical cable Loose int/est antirodent 12 fibre 50/125um OM3 LSZH	Acqua	OM3
111112-12	Optical cable Loose int/est antirodent 12 fibre 62,5/125um LSZH	Grey	OM1
111113-12	Optical cable Loose int/est antirodent 12 fibre 09/125um LSZH	Yellow	OS1
111111-24	Optical cable Loose int/est antirodent 24 fibre 50/125um LSZH	Orange	OM2
111114-24	Optical cable Loose int/est antirodent 24 fibre 50/125um OM3 LSZH	Acqua	OM3

[continue]

[Universal Loose Tube Cables]

Part Number	Description	Color	Type
111112-24	Optical cable Loose int/est antirodent 24 fibre 62,5/125um LSZH	Grey	OM1
111113-24	Optical cable Loose int/est antirodent 24 fibre 09/125um LSZH	Yellow	OS1



## CST Armoured Cable

A wide range of fibers is offered to suit everyone's individual needs. Available in multimode and single mode, loose or tight and steel armored, for indoor or outdoor use. All fibers are sheathed with Low Smoke Zero Halogen (LSZH) jacket. All the fibers specifications meet ISO 11801 and TIA/EIA B requirements.

**Features**

- Steel tape provides crushing and impact resistance while also providing anti-rodent protection
- Lightweight design facilitates installation
- Suitable for direct burial
- Outer jacket is bonded to CST armor
- Improved abrasion resistance
- Crush resistance: 3000 N/10 cm
- Fiber color coded according to TIA/EIA-598
- Longitudinal and lateral waterblocking
- Interstitial dry water blocking as standard in multitubes
- Standard black LDPE sheath for protection against UV radiation
- Single Mode 9/125µm and Multi Mode 1 50/125µm, 62.5/125µm available
- Available in LDPE outer jackets

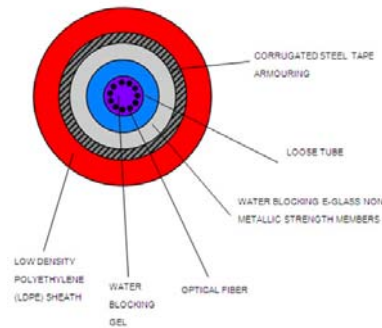


Part Number	Description	Color	Type
111211-04	Optical cable Loose int/est CST armoured 4 fibre 50/125um LSZH	Orange	OM2
111214-04	Optical cable Loose int/est CST armoured 4 fibre 50/125um OM3 LSZH	Acqua	OM3
111212-04	Optical cable Loose int/est CST armoured 4 fibre 62,5/125um LSZH	Grey	OM1
111213-04	Optical cable Loose int/est CST armoured 4 fibre 09/125um LSZH	Yellow	OS1
111211-06	Optical cable Loose int/est CST armoured 6 fibre 50/125um LSZH	Orange	OM2
111214-06	Optical cable Loose int/est CST armoured 6 fibre 50/125um OM3 LSZH	Acqua	OM3
111212-06	Optical cable Loose int/est CST armoured 6 fibre 62,5/125um LSZH	Grey	OM1
111213-06	Optical cable Loose int/est CST armoured 6 fibre 09/125um LSZH	Yellow	OS1
111211-08	Optical cable Loose int/est CST armoured 8 fibre 50/125um LSZH	Orange	OM2
111214-08	Optical cable Loose int/est CST armoured 8 fibre 50/125um OM3 LSZH	Acqua	OM3
111212-08	Optical cable Loose int/est CST armoured 8 fibre 62,5/125um LSZH	Grey	OM1



[continue]

[CST Armoured Cable]			
Part Number	Description	Color	Type
111213-08	Optical cable Loose int/est CST armoured 8 fibre 09/125um LSZH	Yellow	OS1
111211-12	Optical cable Loose int/est CST armoured 12 fibre 50/125um LSZH	Orange	OM2
111214-12	Optical cable Loose int/est CST armoured 12 fibre 50/125um OM3 LSZH	Acqua	OM3
111212-12	Optical cable Loose int/est CST armoured 12 fibre 62,5/125um LSZH	Grey	OM1
111213-12	Optical cable Loose int/est CST armoured 12 fibre 09/125um LSZH	Yellow	OS1
111211-24	Optical cable Loose int/est CST armoured 24 fibre 50/125um LSZH	Orange	OM2
111214-24	Optical cable Loose int/est CST armoured 24 fibre 50/125um OM3 LSZH	Acqua	OM3
111212-24	Optical cable Loose int/est CST armoured 24 fibre 62,5/125um LSZH	Grey	OM1
111213-24	Optical cable Loose int/est CST armoured 24 fibre 09/125um LSZH	Yellow	OS1



## Fiber Optics Drawer



ORCA's 1U high Rack Mount Fiber optic Patch Panel allows for easy and quick arrangement of the fiber optic cables, also provide fiber organization and protection. It can contain up to 24 adapter and can be ordered loaded or unloaded. ORCA's fiber optics drawers feature 6, 12, 24-port capacity. It is 19" (1 unit) high and is rack mounted. Includes blank covers, cable management, cable grip, screws for adapters user's manual and 19" side brackets

### Features

- Holds up to 24 adapters
- 19" high (1 unit)
- Available in multimode and single mode
- Duplex or simplex adapters loaded
- ST, SC and LC adapters
- Cable management
- 24 Blank cover ( Sc, Lc or ST)
- Rear Cable Gland
- 48 adapter screw (only for SC and Lc version)



Part Number	Description	Sleeve	Housing	Mounting	Color
170510-00	Optical drawer ST 1U - complete with plastic accessories	N/A	N/A	N/A	Black
170510-06	Optical drawer ST 1U with 6 adapter SPX multimode	Ceramic	Metal	N/A	Black
170510-12	Optical drawer ST 1U with 12 adapter SPX multimode	Ceramic	Metal	N/A	Black
170510-24	Optical drawer ST 1U with 24 adapter SPX multimode	Ceramic	Metal	N/A	Black
170530-06	Fiber Panel ST DPX 1U 6 adapter singlemode	Ceramic	Metal	N/A	Black
170530-12	Optical drawer ST DPX 1U 12 adapter singlemode	Ceramic	Metal	N/A	Black
170530-24	Optical drawer ST DPX 1U 24 adapter singlemode	Ceramic	Metal	N/A	Black
170110-00	Optical drawer SC DPX 1U - complete with plastic accessories	N/A	N/A	Clips/Screw	Black
170110-06	Optical drawer SC DPX 1U with 6 adapter multimode	Metal	Ceramic	Clips/Screw	Black

[continue]

[Fiber Optics Drawer]					
Part Number	Description	Sleeve	Housing	Mounting	Color
170110-12	Optical drawer SC DPX 1U with 12 adapter multimode	Metal	Ceramic	Clips/Screw	Black
170110-24	Optical drawer SC DPX 1U with 24 adapter multimode	Metal	Ceramic	Clips/Screw	Black
170130-06	Optical drawer SC DPX 1U with 6 adaptersinglemode	Metal	Ceramic	Clips/Screw	Black
170130-12	Optical drawer SC DPX 1U with 12 adaptersinglemode	Metal	Ceramic	Clips/Screw	Black
170130-24	Optical drawer SC DPX 1U with24 adaptersinglemode	Metal	Ceramic	Clips/Screw	Black
170310-00	Optical drawer LC DPX 1U - complete with plastic accessories	N/A	N/A	Clips/Screw	Black
170310-06	Optical drawer LC DPX 1U with6 adapter multimode	Metal	Ceramic	Clips/Screw	Black
170310-12	Optical drawer LC DPX 1U with12 adapter multimode	Metal	Ceramic	Clips/Screw	Black
170310-24	Optical drawer LC DPX 1U with24 adapter multimode	Metal	Ceramic	Clips/Screw	Black
170311-12	Optical drawer LC QPX 1U with12 adapter multimode	Metal	Ceramic	Clips/Screw	Black
170311-24	Optical drawer LC QPX 1U with24 adapter multimode	Metal	Ceramic	Clips/Screw	Black
170330-06	Optical drawer LC DPX 1U with6 adapter singlemode	Metal	Ceramic	Clips/Screw	Black
170330-12	Optical drawer LC DPX 1U with12 adapter singlemode	Metal	Ceramic	Clips/Screw	Black
170330-24	Optical drawer LC DPX 1U with24 adapter singlemode	Metal	Ceramic	Clips/Screw	Black
170331-12	Optical drawer LC QPX 1U with12 adapter singlemode	Metal	Ceramic	Clips/Screw	Black
170331-24	Optical drawer LC QPX 1U with24 adapter singlemode	Metal	Ceramic	Clips/Screw	Black
170110-02	Adapter for optical drawer da 19" a standard ETSI	N/A	N/A	N/A	Black

## Fiber Optic Wall Box



Available for small capacity communication system, wall mounting, reasonable and compact structure, harmonized with machine room. The terminal wall box it is the best solution for indoor optical cable distribution or termination. Provide fusion and storage appliance of fixing, stripping and earthing for optical cables. Whole range protected design for fiber lay to ensure the right bending radius. The Terminal Box include the fiber management accessories (splice tray and cable gland) and to avoid any unexpected damage to the fiber

### Features

- Body in steel in grey (black colour on request)
- Electrostatic spraying
- Outdoor wall mounting
- Provide 24 adapter SC SPX / LC DPX/ST
- Low weight
- Key door locked
- Dimensions: 350x350x80mm
- Max capacity (core): 24 fiber (SC) – 48 fiber (LC)
- Available unloaded
- Available for SC Simplex / LC Duplex and ST adapter (on request for FC adapter)
- Include the cable management accessories
- Packaging: 1 pcs. Per carton (7kg)



Part Number	Description
171000-24	Wall Box 24 port SC SPX / LC / ST with fiber management accessorie
171100-08	Fiber Optic Wall Box 8 port SC SPX / LC DPX unloaded
171310-08	Fiber Optic Wall Box 8 port SC SPX / LC DPX (MM)
171330-08	Fiber Optic Wall Box 8 port SC SPX / LC DPX (SM)



## Epoxy Lc Style Fiber Connector

All the connectors are designated and manufactured with an ISO9001 system. A complete line of fiber connectors for any telecommunications application. Available in Multimode and Single-mode version. Available connector styles include MT-RJ, SC, ST, LC and FC. Feature connectors with ceramic ferrules. Most standard connectors are in stock for immediately ship, special and bulk packages are available and we make quickly on request.



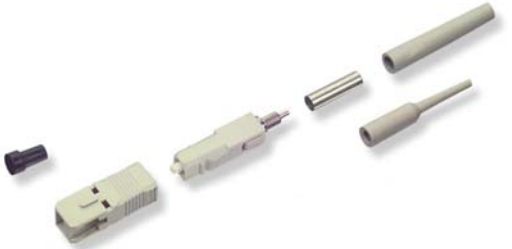
**Features**

- High performance, pre-radius ceramic ferrule
- LC Style compatible coupling
- Universal Connector body
- Available in multimode or singlemode
- Field installable
- Anaerobic epoxy compatible
- For 125 μm cladding diameter
- Included 900 μm and 3mm boots
- Available clips for making one Duplex LC
- ROHS Compliant

Part Number	Description	Ferrule	Body	Temp. Range
130321-01	Connector LC SPX multimodal with 3.0mm	Ceramic	Polymer	-30°C/+70°C
130311-01	Connector LC DPX multimodal with 3.0mm e clip	Ceramic	Polymer	-30°C/+70°C
130321-02	Connector LC SPX multimodal with 900um	Ceramic	Polymer	-30°C/+70°C
130323-01	Connector LC SPX singlemode with 2,8mm	Ceramic	Polymer	-30°C/+70°C
130313-01	Connector LC DPX singlemode with 2,8mm e clip	Ceramic	Polymer	-30°C/+70°C
130323-02	Connector LC SPX singlemode with 900um	Ceramic	Polymer	-30°C/+70°C

## Epoxy SC Style Fiber Connector

All the connectors are designated and manufactured with an ISO9001 system. A complete line of fiber connectors for any telecommunications application. Available in Multimode and Single-mode version. Available connector styles include MT-RJ, SC, ST, LC and FC. Feature connectors with ceramic ferrules. Most standard connectors are in stock for immediately ship, special and bulk packages are available and we make quickly on request.



**Features**

- High performance, pre-radius ceramic ferrule
- SC Style compatible coupling
- Universal Connector body
- Available in multimode or singlemode
- Field installable
- Anaerobic epoxy compatible
- For 125 μm cladding diameter
- Included 900 μm and 3mm boots
- Available clips for making one Duplex LC
- ROHS Compliant

Part Number	Description	Ferrule	Body	Temp. Range
130121-00	Connector SC Simplex multimodal with 3.0mm/900um	Ceramic	Polymer	-30°C/+70°C
130123-00	Connector SC SPX singlemode with 2.8mm/900um	Ceramic	Metal	-30°C/+70°C
130121-05	Clips to unite two - connector SC color beige	Ceramic	Polymer	-30°C/+70°C
130123-05	Clips to unite two ORCA - connector SC color blue	Ceramic	Polymer	-30°C/+70°C

## Epoxy ST Style Fiber Connector



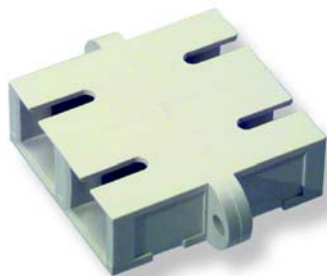
All the connectors are designed and manufactured with an ISO9001 system. A complete line of fiber connectors for any telecommunications application. Available in Multimode and Single-mode version. Available connector styles include MT-RJ, SC, ST, LC and FC. Feature connectors with ceramic ferrules. Most standard connectors are in stock for immediately ship, special and bulk packages are available and we make quickly on request.

### Features

- High performance, pre-radius ceramic ferrule
- SC Style compatible coupling
- Universal Connector body
- Available in multimode or singlemode
- Field installable
- Anaerobic epoxy compatible
- For 125 μm cladding diameter
- Included 900 μm and 3mm boots
- Available clips for making one Duplex LC
- ROHS Compliant

Part Number	Description	Ferrule	Body	Temp. Range
130221-00	Connector ST multimodal with 3.0mm/900um	Ceramic	Polymer	-30°C/+70°C
130223-00	Connector ST singlemode with 3.0mm	Ceramic	Polymer	-30°C/+70°C

## Fiber Adapter



A complete line of fiber adapter for any telecommunications application. Available in Multimode and Single-mode version. Available connector styles include MT-RJ, SC, ST, LC and FC. Feature adapter with ceramic or metal sleeve. Most standard adapter are in stock for immediately ship, special and bulk packages are available and we make quickly on request.

### Features

- Suitable for any LC and SC connectors
- Sc and St style compatible coupling
- Available in multimode or singlemode
- Available with metal or ceramic sleeve
- Duplex adapter accept two simplex connectors
- Hybrid configuration available
- ROHS compliant



Part Number	Description	Sleeve	Housing	Mounting	Packaging	Color
140221-00	Adapter ST SPX multimodal	Metal	Plastic	Clips/Screw	6	Almond
140121-00	Adapter SC SPX multimodal	Metal	Plastic	Clips/Screw	6	Almond
140111-00	Adapter SC DPX multimodal	Metal	Plastic	Clips/Screw	6	Almond
140211-00	Adapter ST DPX multimodal	Metal	Plastic	Clips/Screw	6	Almond
142111-00	Adapter ST-SC DPX multimodal	Metal	Plastic	Clips/Screw	6	Almond
143321-00	Adapter LC SPX multimodal	Metal	Plastic	Clips/Screw	10	Almond
140311-00	Adapter LC DPX multimodal	Metal	Plastic	Clips/Screw	10	Almond
140331-00	Adapter LC 4 positions multimodal	Metal	Plastic	Clips/Screw	4	Almond
140411-00	Adapter MT duplex multimode	Metal	Plastic	Clips/Screw	6	Almond
140521-00	Adapter FC multimodal	Metal	Plastic	Clips/Screw	6	Almond
140223-00	Adapter ST SPX singlemode	Metal	Plastic	Clips/Screw	6	Blue

[continue]

[Fiber Adapter]						
Part Number	Description	Sleeve	Housing	Mounting	Packaging	Color
140213-00	Adapter ST DPX singlemode	Metal	Plastic	Clips/Screw	6	Blue
140123-00	Adapter SC SPX singlemode	Metal	Plastic	Clips/Screw	6	Blue
140113-00	Adapter SC DPX singlemode	Metal	Plastic	Clips/Screw	6	Blue
142123-00	Adapter ST-SC SPX monomodal	Metal	Plastic	Clips/Screw	6	Blue
142113-00	Adapter ST-SC DPX monomodal	Metal	Plastic	Clips/Screw	6	Blue
140323-00	Adapter LC SPX singlemode	Metal	Plastic	Clips/Screw	10	Blue
140313-00	Adapter LC DPX singlemode	Metal	Plastic	Clips/Screw	10	Blue
140333-00	Adapter LC 4 positions singlemode	Metal	Plastic	Clips/Screw	4	Blue
140413-00	Adapter MT DPX singlemode	Metal	Plastic	Clips/Screw	6	Blue
140523-00	Adapter FC singlemode	Metal	Plastic	Clips/Screw	6	Blue



## Attenuators

Connected Fibers provides Singlemode and Multimode plug type attenuators with all standard connector types (UPC and APC versions of SC, FC, ST, LC). These high quality attenuators can be utilized for many applications ranging from telecom to CATV applications

### Features

- Return Loss 55 db
- Available type ST, SC, LC, FC



Part Number	Description
150213-50	Attenuator singlemode 50dB type ST
150113-50	Attenuator singlemode 50dB type SC
150313-50	Attenuator singlemode 50dB type LC
150513-50	Attenuator singlemode 50dB type FC

[continue]



[Attenuators]	
Part Number	Description
150613-50	Attenuator singlemode 50dB type SC APC
150713-50	Attenuator singlemode 50dB type FC APC



## Fiber Patch Cord SC-SC Duplex



All the patch cords are designated and manufactured with an ISO9001 system. A complete line of cable assemblies for any telecommunications application. Each patch cord is factory-terminated and tested. Manufactured using quality ORCA cable and connectors. Available in 50/125  $\mu\text{m}$ , OM3 50/125  $\mu\text{m}$  and 62,5/125  $\mu\text{m}$ . Most standard cable assemblies are in stock for immediate shipment, special configurations are available and we make quickly on request. Call for quotes on custom cable assemblies. All and the final product are designed and tested to conform to the requirements of IEC 60874-14, CECC 86260, Bellcore/Telcordia GR-326, EIA/TIA 604-3A, EIA/TIA 568, ISO/IEC 11801 2nd Ed., EN 50173, JIS C5973 F04, ICEA-596, IEC60793-2-10 A1a, ITU-T G.651 or IEC60793-2-10 A1b or ITU-T G.652 (depending on fiber diameter), Bellcore/Telcordia GR-409-CORE, IEC 794-1-E1, IEC 794-1-E3, UL1666/901 (UL-cable) and EIA/TIA455

### Features

- Cable sheath LSZH
- Cable diameter 3.0 mm Twin Zip
- Buffer 0.9 mm Strip easy
- Ceramic Ferrule
- All assemblies are semi-tight cable constructions
- Machine polished providing
- high test quality with controlled end-face
- Test report printed on each cable assemblies label
- ROHS Compliant
- Available in singlemode and multimode

Part Number	Description	Insertion Loss typ (max)	Return Loss	Temp. Range	Color
121111-01	Patch cord SC-SC DPX LSZH 50/125um L. 1 m	0,3dB	45-50dB	-10°C/+60°C	Orange
121111-02	Patch cord SC-SC DPX LSZH 50/125um L. 2 m	0,3dB	45-50dB	-10°C/+60°C	Orange
121111-03	Patch cord SC-SC DPX LSZH 50/125um L. 3 m	0,3dB	45-50dB	-10°C/+60°C	Orange
121111-05	Patch cord SC-SC DPX LSZH 50/125um L. 5 m	0,3dB	45-50dB	-10°C/+60°C	Orange
121111-10	Patch cord SC-SC DPX LSZH 50/125um L. 10 m	0,3dB	45-50dB	-10°C/+60°C	Orange
121114-01	Patch cord SC-SC DPX LSZH 50/125um OM3 L. 1 m	0,3dB	45-50dB	-10°C/+60°C	Acqua
121114-02	Patch cord SC-SC DPX LSZH 50/125um OM3 L. 2 m	0,3dB	45-50dB	-10°C/+60°C	Acqua
121114-03	Patch cord SC-SC DPX LSZH 50/125um OM3 L. 3 m	0,3dB	45-50dB	-10°C/+60°C	Acqua

[continue]

[Fiber Patch Cord SC-SC Duplex]

Part Number	Description	Insertion Loss typ (max)	Return Loss	Temp. Range	Color
121114-05	Patch cord SC-SC DPX LSZH 50/125um OM3 L. 5 m	0,3dB	45-50dB	-10°C/+60°C	Acqua
121114-10	Patch cord SC-SC DPX LSZH 50/125um OM3 L. 10 m	0,3dB	45-50dB	-10°C/+60°C	Acqua
121112-01	Patch cord SC-SC DPX LSZH 62,5/125um L. 1 m	0,3dB	45-50dB	-10°C/+60°C	Grey
121112-02	Patch cord SC-SC DPX LSZH 62,5/125um L. 2 m	0,3dB	45-50dB	-10°C/+60°C	Grey
121112-03	Patch cord SC-SC DPX LSZH 62,5/125um L. 3 m	0,3dB	45-50dB	-10°C/+60°C	Grey
121112-05	Patch cord SC-SC DPX LSZH 62,5/125um L. 5 m	0,3dB	45-50dB	-10°C/+60°C	Grey
121112-10	Patch cord SC-SC DPX LSZH 62,5/125um L. 10 m	0,3dB	45-50dB	-10°C/+60°C	Grey
121113-01	Patch cord SC-SC DPX LSZH 9/125um L. 1 m	0,2dB-0,15dB	55dB	-10°C/+60°C	Yellow
121113-02	Patch cord SC-SC DPX LSZH 9/125um L. 2 m	0,2dB-0,15dB	55dB	-10°C/+60°C	Yellow
121113-03	Patch cord SC-SC DPX LSZH 9/125um L. 3 m	0,2dB-0,15dB	55dB	-10°C/+60°C	Yellow
121113-05	Patch cord SC-SC DPX LSZH 9/125um L. 5 m	0,2dB-0,15dB	55dB	-10°C/+60°C	Yellow
121113-10	Patch cord SC-SC DPX LSZH 9/125um L. 10 m	0,2dB-0,15dB	55dB	-10°C/+60°C	Yellow

## Fiber Patch Cord ST-ST Duplex

All the patch cords are designated and manufactured with an ISO9001 system. A complete line of cable assemblies for any telecommunications application. Each patch cord is factory-terminated and tested. Manufactured using quality ORCA cable and connectors. Available in 50/125 μm, OM3 50/125 μm and 62,5/125 μm Most standard cable assemblies are in stock for immediately ship, special configuration are available and we make quickly on request. Call for quotes on custom cable assemblies. All components and the final product are designed and tested to conform the requirements of IEC 60874-14, CECC 86260, Bellcore/Telcordia GR-326, EIA/TIA 604-3A, EIA/TIA 568, ISO/IEC 11801 2nd Ed., EN 50173, JIS C5973 F04, ICEA-596, IEC60793-2-10 A1a, ITU-T G.651 or IEC60793-2-10 A1b or ITU-T G.652 (depending on fiber diameter), Bellcore/Telcordia GR-409-CORE, IEC 794-1-E1, IEC 794-1-E3, UL1666/901 (UL-cable) and EIA/TIA455



### Features

- Cable sheath LSZH
- Cable diameter 3.0 mm Twin Zip
- Buffer 0.9 mm Strip easy
- Ceramic Ferrule
- All assemblies are semi-tight cable constructions
- Machine polished providing
- high test quality with controlled end-face
- Test report printed on each cable assemblies label
- ROHS Compliant
- Available in singlemode and multmode

Part Number	Description	Insertion Loss typ (max)	Return Loss	Temp. Range	Color
122211-01	Patch cord ST-ST DPX LSZH 50/125um L. 1 m	0,3dB	45-50dB	-10°C/+60°C	Orange
122211-02	Patch cord ST-ST DPX LSZH 50/125um L. 2 m	0,3dB	45-50dB	-10°C/+60°C	Orange
122211-03	Patch cord ST-ST DPX LSZH 50/125um L. 3 m	0,3dB	45-50dB	-10°C/+60°C	Orange
122211-05	Patch cord ST-ST DPX LSZH 50/125um L. 5 m	0,3dB	45-50dB	-10°C/+60°C	Orange
122211-10	Patch cord ST-ST DPX LSZH 50/125um L. 10 m	0,3dB	45-50dB	-10°C/+60°C	Orange
122214-01	Patch cord ST-ST DPX LSZH 50/125um OM3 L. 1 m	0,3dB	45-50dB	-10°C/+60°C	Acqua
122214-02	Patch cord ST-ST DPX LSZH 50/125um OM3 L. 2 m	0,3dB	45-50dB	-10°C/+60°C	Acqua
122214-03	Patch cord ST-ST DPX LSZH 50/125um OM3 L. 3 m	0,3dB	45-50dB	-10°C/+60°C	Acqua
122214-05	Patch cord ST-ST DPX LSZH 50/125um OM3 L. 5 m	0,3dB	45-50dB	-10°C/+60°C	Acqua

[continue]

[Fiber Patch Cord ST-ST Duplex]						
Part Number	Description	Insertion Loss typ (max)	Return Loss	Temp. Range	Color	
122214-10	Patch cord ST-ST DPX LSZH 50/125um OM3 L. 10 m	0,3dB	45-50dB	-10°C/+60°C	Acqua	
122212-01	Patch cord ST-ST DPX LSZH 62,5/125um L. 1 m	0,3dB	45-50dB	-10°C/+60°C	Acqua	
122212-02	Patch cord ST-ST DPX LSZH 62,5/125um L. 2 m	0,3dB	45-50dB	-10°C/+60°C	Grey	
122212-03	Patch cord ST-ST DPX LSZH 62,5/125um L. 3 m	0,3dB	45-50dB	-10°C/+60°C	Grey	
122212-05	Patch cord ST-ST DPX LSZH 62,5/125um L. 5 m	0,3dB	45-50dB	-10°C/+60°C	Grey	
122212-10	Patch cord ST-ST DPX LSZH 62,5/125um L. 10 m	0,3dB	45-50dB	-10°C/+60°C	Grey	
122213-01	Patch cord ST-ST DPX LSZH 9/125um L. 1 m	0,2dB-0,15dB	55dB	-10°C/+60°C	Yellow	
122213-02	Patch cord ST-ST DPX LSZH 9/125um L. 2 m	0,2dB-0,15dB	55dB	-10°C/+60°C	Yellow	
122213-03	Patch cord ST-ST DPX LSZH 9/125um L. 3 m	0,2dB-0,15dB	55dB	-10°C/+60°C	Yellow	
122213-05	Patch cord ST-ST DPX LSZH 9/125um L. 5 m	0,2dB-0,15dB	55dB	-10°C/+60°C	Yellow	
122213-10	Patch cord ST-ST DPX LSZH 9/125um L. 10 m	0,2dB-0,15dB	55dB	-10°C/+60°C	Yellow	



## Fiber Patch Cord SC-ST Duplex

All the patch cords are designated and manufactured with an ISO9001 system. A complete line of cable assemblies for any telecommunications application. Each patch cord is factory-terminated and tested. Manufactured using quality ORCA cable and connectors. Available in 50/125  $\mu\text{m}$ , OM3 50/125  $\mu\text{m}$  and 62,5/125  $\mu\text{m}$ . Most standard cable assemblies are in stock for immediate shipment, special configurations are available and we make quickly on request. Call for quotes on custom cable assemblies. All components and the final product are designed and tested to conform to the requirements of IEC 60874-14, CECC 86260, Bellcore/Telcordia GR-326, EIA/TIA 604-3A, EIA/TIA 568, ISO/IEC 11801 2nd Ed., EN 50173, JIS C5973 F04, ICEA-596, IEC60793-2-10 A1a, ITU-T G.651 or IEC60793-2-10 A1b or ITU-T G.652 (depending on fiber diameter), Bellcore/Telcordia GR-409-CORE, IEC 794-1-E1, IEC 794-1-E3, UL1666/901 (UL-cable) and EIA/TIA455



### Features

- Cable sheath LSZH high test quality with controlled end-face
- Cable diameter 3.0 mm Twin Zip
- Buffer 0.9 mm Strip easy
- Ceramic Ferrule
- All assemblies are semi-tight cable constructions
- Machine polished providing
- Test report printed on each cable assemblies label
- ROHS Compliant
- Other lengths are available on request

Part Number	Description	Insertion Loss typ (max)	Return Loss	Temp. Range	Color
121211-01	Patch cord SC-ST DPX LSZH 50/125 $\mu\text{m}$ L. 1 m	0,3dB	45-50dB	-10°C/+60°C	Orange
121211-02	Patch cord SC-ST DPX LSZH 50/125 $\mu\text{m}$ L. 2 m	0,3dB	45-50dB	-10°C/+60°C	Orange
121211-03	Patch cord SC-ST DPX LSZH 50/125 $\mu\text{m}$ L. 3 m	0,3dB	45-50dB	-10°C/+60°C	Orange
121211-05	Patch cord SC-ST DPX LSZH 50/125 $\mu\text{m}$ L. 5 m	0,3dB	45-50dB	-10°C/+60°C	Orange
121211-10	Patch cord SC-ST DPX LSZH 50/125 $\mu\text{m}$ L. 10 m	0,3dB	45-50dB	-10°C/+60°C	Orange
121214-01	Patch cord SC-ST DPX LSZH 50/125 $\mu\text{m}$ OM3 L. 1 m	0,3dB	45-50dB	-10°C/+60°C	Acqua
121214-02	Patch cord SC-ST DPX LSZH 50/125 $\mu\text{m}$ OM3 L. 2 m	0,3dB	45-50dB	-10°C/+60°C	Acqua
121214-03	Patch cord SC-ST DPX LSZH 50/125 $\mu\text{m}$ OM3 L. 3 m	0,3dB	45-50dB	-10°C/+60°C	Acqua
121214-05	Patch cord SC-ST DPX LSZH 50/125 $\mu\text{m}$ OM3 L. 5 m	0,3dB	45-50dB	-10°C/+60°C	Acqua
121214-10	Patch cord SC-ST DPX LSZH 50/125 $\mu\text{m}$ OM3 L. 10 m	0,3dB	45-50dB	-10°C/+60°C	Acqua
121212-01	Patch cord SC-ST DPX LSZH 62,5/125 $\mu\text{m}$ L. 1 m	0,3dB	45-50dB	-10°C/+60°C	Grey
121212-02	Patch cord SC-ST DPX LSZH 62,5/125 $\mu\text{m}$ L. 2 m	0,3dB	45-50dB	-10°C/+60°C	Grey
121212-03	Patch cord SC-ST DPX LSZH 62,5/125 $\mu\text{m}$ L. 3 m	0,3dB	45-50dB	-10°C/+60°C	Grey
121212-05	Patch cord SC-ST DPX LSZH 62,5/125 $\mu\text{m}$ L. 5 m	0,3dB	45-50dB	-10°C/+60°C	Grey
121212-10	Patch cord SC-ST DPX LSZH 62,5/125 $\mu\text{m}$ L. 10 m	0,3dB	45-50dB	-10°C/+60°C	Grey
121213-01	Patch cord SC-ST DPX LSZH 9/125 $\mu\text{m}$ L. 1 m	0,2dB-0,15dB	55dB	-10°C/+60°C	Yellow
121213-02	Patch cord SC-ST DPX LSZH 9/125 $\mu\text{m}$ L. 2 m	0,2dB-0,15dB	55dB	-10°C/+60°C	Yellow
121213-03	Patch cord SC-ST DPX LSZH 9/125 $\mu\text{m}$ L. 3 m	0,2dB-0,15dB	55dB	-10°C/+60°C	Yellow
121213-05	Patch cord SC-ST DPX LSZH 9/125 $\mu\text{m}$ L. 5 m	0,2dB-0,15dB	55dB	-10°C/+60°C	Yellow
121213-10	Patch cord SC-ST DPX LSZH 9/125 $\mu\text{m}$ L. 10 m	0,2dB-0,15dB	55dB	-10°C/+60°C	Yellow



## Fiber Patch Cord MT-RJ Duplex



Each patch cord is factory-terminated and tested. Manufactured using quality ORCA cable and connectors. Available in 50/125 μm, OM3 50/125 μm and 62,5/125 μm Multimode and Single-mode. Feature connectors with ceramic ferrules. Most standard cable assemblies are in stock for immediately ship, special configuration are available and we make quickly on request. Call for quotes on custom cable assemblies.

### Features

- Cable sheath LSZH
- Cable diameter 3.0 mm Twin Zip
- Buffer 0.9 mm Strip easy
- Ceramic Ferrule
- All assemblies are semi-tight cable constructions
- Machine polished providing high test quality with controlled end-face
- Test report printed on each cable assemblies label
- ROHS Compliant
- Other lengths are available on request



Part Number	Description	Insertion Loss typ (max)	Return Loss	Temp. Range	Color
124411-01	Patch cord MT-MT DPX LSZH 50/125um L. 1 m	0,3dB	45-50dB	-10°C/+60°C	Orange
124411-02	Patch cord MT-MT DPX LSZH 50/125um L. 2 m	0,3dB	45-50dB	-10°C/+60°C	Orange
124411-03	Patch cord MT-MT DPX LSZH 50/125um L. 3 m	0,3dB	45-50dB	-10°C/+60°C	Orange
124411-05	Patch cord MT-MT DPX LSZH 50/125um L. 5 m	0,3dB	45-50dB	-10°C/+60°C	Orange
124412-01	Patch cord MT-MT DPX LSZH 62/125um L. 1 m	0,3dB	45-50dB	-10°C/+60°C	Grey
124412-02	Patch cord MT-MT DPX LSZH 62/125um L. 2 m	0,3dB	45-50dB	-10°C/+60°C	Grey
124412-03	Patch cord MT-MT DPX LSZH 62/125um L. 3 m	0,3dB	45-50dB	-10°C/+60°C	Grey
124412-05	Patch cord MT-MT DPX LSZH 62/125um L. 5 m	0,3dB	45-50dB	-10°C/+60°C	Grey
124413-01	Patch cord MT-MT DPX LSZH 09/125um L. 1 m	0,2dB-0,15dB	55dB	-10°C/+60°C	Yellow
124413-02	Patch cord MT-MT DPX LSZH 09/125um L. 2 m	0,2dB-0,15dB	55dB	-10°C/+60°C	Yellow
124413-03	Patch cord MT-MT DPX LSZH 09/125um L. 3 m	0,2dB-0,15dB	55dB	-10°C/+60°C	Yellow
124413-05	Patch cord MT-MT DPX LSZH 09/125um L. 5 m	0,2dB-0,15dB	55dB	-10°C/+60°C	Yellow
124211-01	Patch cord MT-ST DPX LSZH 50/125um L. 1 m	0,3dB	45-50dB	-10°C/+60°C	Orange
124211-02	Patch cord MT-ST DPX LSZH 50/125um L. 2 m	0,3dB	45-50dB	-10°C/+60°C	Orange
124211-03	Patch cord MT-ST DPX LSZH 50/125um L. 3 m	0,3dB	45-50dB	-10°C/+60°C	Orange
124211-05	Patch cord MT-ST DPX LSZH 50/125um L. 5 m	0,3dB	45-50dB	-10°C/+60°C	Orange
124212-01	Patch cord MT-ST DPX LSZH 62/125um L. 1 m	0,3dB	45-50dB	-10°C/+60°C	Grey
124212-02	Patch cord MT-ST DPX LSZH 62/125um L. 2 m	0,3dB	45-50dB	-10°C/+60°C	Grey
124212-03	Patch cord MT-ST DPX LSZH 62/125um L. 3 m	0,3dB	45-50dB	-10°C/+60°C	Grey
124212-05	Patch cord MT-ST DPX LSZH 62/125um L. 5 m	0,3dB	45-50dB	-10°C/+60°C	Grey
124213-01	Patch cord MT-ST DPX LSZH 09/125um L. 1 m	0,2dB-0,15dB	55dB	-10°C/+60°C	Yellow
124213-02	Patch cord MT-ST DPX LSZH 09/125um L. 2 m	0,2dB-0,15dB	55dB	-10°C/+60°C	Yellow
124213-03	Patch cord MT-ST DPX LSZH 09/125um L. 3 m	0,2dB-0,15dB	55dB	-10°C/+60°C	Yellow
124213-05	Patch cord MT-ST DPX LSZH 09/125um L. 5 m	0,2dB-0,15dB	55dB	-10°C/+60°C	Yellow
124111-01	Patch cord MT-SC DPX LSZH 50/125um L. 1 m	0,3dB	45-50dB	-10°C/+60°C	Orange
124111-02	Patch cord MT-SC DPX LSZH 50/125um L. 2 m	0,3dB	45-50dB	-10°C/+60°C	Orange
124111-03	Patch cord MT-SC DPX LSZH 50/125um L. 3 m	0,3dB	45-50dB	-10°C/+60°C	Orange
124111-05	Patch cord MT-SC DPX LSZH 50/125um L. 5 m	0,3dB	45-50dB	-10°C/+60°C	Orange
124112-01	Patch cord MT-SC DPX LSZH 62/125um L. 1 m	0,3dB	45-50dB	-10°C/+60°C	Grey
124112-02	Patch cord MT-SC DPX LSZH 62/125um L. 2 m	0,3dB	45-50dB	-10°C/+60°C	Grey
124112-03	Patch cord MT-SC DPX LSZH 62/125um L. 3 m	0,3dB	45-50dB	-10°C/+60°C	Grey
124112-05	Patch cord MT-SC DPX LSZH 62/125um L. 5 m	0,3dB	45-50dB	-10°C/+60°C	Grey

[continue]

[Fiber Patch Cord MT-RJ Duplex]

Part Number	Description	Insertion Loss typ (max)	Return Loss	Temp. Range	Color
124113-01	Patch cord MT-SC DPX LSZH 09/125um L. 1 m	0,2dB-0,15dB	55dB	-10°C/+60°C	Yellow
124113-02	Patch cord MT-SC DPX LSZH 09/125um L. 2 m	0,2dB-0,15dB	55dB	-10°C/+60°C	Yellow
124113-03	Patch cord MT-SC DPX LSZH 09/125um L. 3 m	0,2dB-0,15dB	55dB	-10°C/+60°C	Yellow
124113-05	Patch cord MT-SC DPX LSZH 09/125um L. 5 m	0,2dB-0,15dB	55dB	-10°C/+60°C	Yellow
124311-01	Patch cord MT-LC DPX LSZH 50/125um L. 1 m	0,3dB	45-50dB	-10°C/+60°C	Orange
124311-02	Patch cord MT-LC DPX LSZH 50/125um L. 2 m	0,3dB	45-50dB	-10°C/+60°C	Orange
124311-03	Patch cord MT-LC DPX LSZH 50/125um L. 3 m	0,3dB	45-50dB	-10°C/+60°C	Orange
124311-05	Patch cord MT-LC DPX LSZH 50/125um L. 5 m	0,3dB	45-50dB	-10°C/+60°C	Orange
124312-01	Patch cord MT-LC DPX LSZH 62/125um L. 1 m	0,3dB	45-50dB	-10°C/+60°C	Grey
124312-02	Patch cord MT-LC DPX LSZH 62/125um L. 2 m	0,3dB	45-50dB	-10°C/+60°C	Grey
124312-03	Patch cord MT-LC DPX LSZH 62/125um L. 3 m	0,3dB	45-50dB	-10°C/+60°C	Grey
124312-05	Patch cord MT-LC DPX LSZH 62/125um L. 5 m	0,3dB	45-50dB	-10°C/+60°C	Grey
124313-01	Patch cord MT-LC DPX LSZH 09/125um L. 1 m	0,2dB-0,15dB	55dB	-10°C/+60°C	Yellow
124313-02	Patch cord MT-LC DPX LSZH 09/125um L. 2 m	0,2dB-0,15dB	55dB	-10°C/+60°C	Yellow
124313-03	Patch cord MT-LC DPX LSZH 09/125um L. 3 m	0,2dB-0,15dB	55dB	-10°C/+60°C	Yellow
124313-05	Patch cord MT-LC DPX LSZH 09/125um L. 5 m	0,2dB-0,15dB	55dB	-10°C/+60°C	Yellow



## Fiber Patch Cord LC Duplex



All the patch cords are designated and manufactured with an ISO9001 system. A complete line of cable assemblies for any telecommunications application. Each patch cord is factory-terminated and tested. Manufactured using quality ORCA cable and connectors. Available in 50/125  $\mu\text{m}$ , OM3 50/125  $\mu\text{m}$  and 62,5/125  $\mu\text{m}$  Multimode and Single-mode. Feature connectors with ceramic ferrules. Most standard cable assemblies are in stock for immediately ship, special configuration are available and we make quickly on request. All components and the final product are designed and tested to conform the requirements of IEC 60874-14, CECC 86260, Bellcore/Telcordia GR-326, EIA/TIA 604-3A, EIA/TIA 568, ISO/IEC 11801 2nd Ed., EN 50173, JIS C5973 F04, ICEA-596, IEC60793-2-10 A1a, ITU-T G.651 or IEC60793-2-10 A1b or ITU-T G.652 (depending on fiber diameter), Bellcore/Telcordia GR-409-CORE, IEC 794-1-E1, IEC 794-1-E3, UL1666/901 (UL cable) and EIA/TIA455.

### Features

- Cable sheath LSZH
- Cable diameter 3.0 mm Twin Zip
- Buffer 0.9 mm Strip easy
- Ceramic Ferrule
- All assemblies are semi-tight cable constructions
- Machine polished providing
- high test quality with controlled end-face
- Test report printed on each cable assemblies label
- ROHS Compliant
- Other lengths are available on request

Part Number	Description	Insertion Loss typ (max)	Return Loss	Temp. Range	Color
123311-01	Patch cord LC-LC DPX LSZH 50/125 $\mu\text{m}$ L. 1 m	0,3dB	45-50dB	-10°C/+60°C	Orange
123311-02	Patch cord LC-LC DPX LSZH 50/125 $\mu\text{m}$ L. 2m	0,3dB	45-50dB	-10°C/+60°C	Orange
123311-03	Patch cord LC-LC DPX LSZH 50/125 $\mu\text{m}$ L. 3m	0,3dB	45-50dB	-10°C/+60°C	Orange
123311-05	Patch cord LC-LC DPX LSZH 50/125 $\mu\text{m}$ L. 5m	0,3dB	45-50dB	-10°C/+60°C	Orange
123311-10	Patch cord LC-LC DPX LSZH 50/125 $\mu\text{m}$ L. 10m	0,3dB	45-50dB	-10°C/+60°C	Orange
123314-01	Patch cord LC-LC DPX LSZH 50/125 $\mu\text{m}$ OM3 L. 1 m	0,3dB	45-50dB	-10°C/+60°C	Acqua
123314-02	Patch cord LC-LC DPX LSZH 50/125 $\mu\text{m}$ OM3 L. 2 m	0,3dB	45-50dB	-10°C/+60°C	Acqua
123314-03	Patch cord LC-LC DPX LSZH 50/125 $\mu\text{m}$ OM3 L. 3 m	0,3dB	45-50dB	-10°C/+60°C	Acqua
123314-05	Patch cord LC-LC DPX LSZH 50/125 $\mu\text{m}$ OM3 L. 5 m	0,3dB	45-50dB	-10°C/+60°C	Acqua
123314-10	Patch cord LC-LC DPX LSZH 50/125 $\mu\text{m}$ OM3 L. 10 m	0,3dB	45-50dB	-10°C/+60°C	Acqua
123312-01	Patch cord LC-LC DPX LSZH 62,5/125 $\mu\text{m}$ L. 1 m	0,3dB	45-50dB	-10°C/+60°C	Grey
123312-02	Patch cord LC-LC DPX LSZH 62,5/125 $\mu\text{m}$ L. 2 m	0,3dB	45-50dB	-10°C/+60°C	Grey
123312-03	Patch cord LC-LC DPX LSZH 62,5/125 $\mu\text{m}$ L. 3 m	0,3dB	45-50dB	-10°C/+60°C	Grey
123312-05	Patch cord LC-LC DPX LSZH 62,5/125 $\mu\text{m}$ L. 5 m	0,3dB	45-50dB	-10°C/+60°C	Grey
123312-10	Patch cord LC-LC DPX LSZH 62,5/125 $\mu\text{m}$ L. 10 m	0,3dB	45-50dB	-10°C/+60°C	Grey
123313-01	Patch cord LC-LC DPX LSZH 09/125 $\mu\text{m}$ L. 1 m	0,2dB-0,15dB	55dB	-10°C/+60°C	Yellow
123313-02	Patch cord LC-LC DPX LSZH 09/125 $\mu\text{m}$ L. 2 m	0,2dB-0,15dB	55dB	-10°C/+60°C	Yellow
123313-03	Patch cord LC-LC DPX LSZH 09/125 $\mu\text{m}$ L. 3 m	0,2dB-0,15dB	55dB	-10°C/+60°C	Yellow
123313-05	Patch cord LC-LC DPX LSZH 09/125 $\mu\text{m}$ L. 5 m	0,2dB-0,15dB	55dB	-10°C/+60°C	Yellow
123313-10	Patch cord LC-LC DPX LSZH 09/125 $\mu\text{m}$ L. 10 m	0,2dB-0,15dB	55dB	-10°C/+60°C	Yellow

## Fiber Patch Cord LC-ST Duplex

All the patch cords are designated and manufactured with an ISO9001 system. A complete line of cable assemblies for any telecommunications application. Each patch cord is factory-terminated and tested. Manufactured using quality ORCA cable and connectors. Available in 50/125  $\mu\text{m}$ , OM3 50/125  $\mu\text{m}$  and 62,5/125  $\mu\text{m}$  Multimode and Single-mode. Feature connectors with ceramic ferrules. Most standard cable assemblies are in stock for immediately ship, special configuration are available and we make quickly on request. All components and the final product are designed and tested to conform to the requirements of IEC 60874-14, CECC 86260, Bellcore/Telcordia GR-326, EIA/TIA 604-3A, EIA/TIA 568, ISO/IEC 11801 2nd Ed., EN 50173, JIS C5973 F04, ICEA-596, IEC60793-2-10 A1a, ITU-T G.651 or IEC60793-2-10 A1b or ITU-T G.652 (depending on fiber diameter), Bellcore/Telcordia GR-409-CORE, IEC 794-1-E1, IEC 794-1-E3, UL1666/901 (UL cable) and EIA/TIA455.



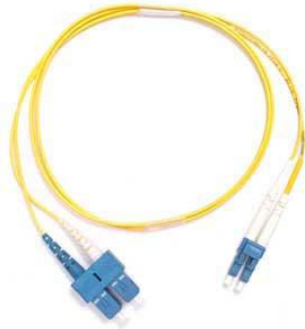
### Features

- Cable sheath LSZH controlled end-face
- Cable diameter 3.0 mm Twin Zip
- Buffer 0.9 mm Strip easy
- Ceramic Ferrule
- Machine polished providing high test quality with
- Test report printed on each cable assemblies label
- ROHS Compliant
- Other lengths are available on request

Part Number	Description	Insertion Loss typ (max)	Return Loss	Temp. Range	Color
123211-01	Patch cord LC-ST DPX LSZH 50/125um L. 1 m	0,3dB	45-50dB	-10°C/+60°C	Orange
123211-02	Patch cord LC-ST DPX LSZH 50/125um L. 2m	0,3dB	45-50dB	-10°C/+60°C	Orange
123211-03	Patch cord LC-ST DPX LSZH 50/125um L. 3m	0,3dB	45-50dB	-10°C/+60°C	Orange
123211-05	Patch cord LC-ST DPX LSZH 50/125um L. 5m	0,3dB	45-50dB	-10°C/+60°C	Orange
123211-10	Patch cord LC-ST DPX LSZH 50/125um L. 10m	0,3dB	45-50dB	-10°C/+60°C	Orange
123214-01	Patch cord LC-ST DPX LSZH 50/125um OM3 L. 1 m	0,3dB	45-50dB	-10°C/+60°C	Acqua
123214-02	Patch cord LC-ST DPX LSZH 50/125um OM3 L. 2 m	0,3dB	45-50dB	-10°C/+60°C	Acqua
123214-03	Patch cord LC-ST DPX LSZH 50/125um OM3 L. 3 m	0,3dB	45-50dB	-10°C/+60°C	Acqua
123214-05	Patch cord LC-ST DPX LSZH 50/125um OM3 L. 5 m	0,3dB	45-50dB	-10°C/+60°C	Acqua
123214-10	Patch cord LC-ST DPX LSZH 50/125um OM3 L. 10 m	0,3dB	45-50dB	-10°C/+60°C	Acqua
123212-01	Patch cord LC-ST DPX LSZH 62,5/125um L. 1 m	0,3dB	45-50dB	-10°C/+60°C	Grey
123212-02	Patch cord LC-ST DPX LSZH 62,5/125um L. 2 m	0,3dB	45-50dB	-10°C/+60°C	Grey
123212-03	Patch cord LC-ST DPX LSZH 62,5/125um L. 3 m	0,3dB	45-50dB	-10°C/+60°C	Grey
123212-05	Patch cord LC-ST DPX LSZH 62,5/125um L. 5 m	0,3dB	45-50dB	-10°C/+60°C	Grey
123212-10	Patch cord LC-ST DPX LSZH 62,5/125um L. 10 m	0,3dB	45-50dB	-10°C/+60°C	Grey
123213-01	Patch cord LC-ST DPX LSZH 9/125um L. 1 m	0,2dB-0,15dB	55dB	-10°C/+60°C	Yellow
123213-02	Patch cord LC-ST DPX LSZH 9/125um L. 2 m	0,2dB-0,15dB	55dB	-10°C/+60°C	Yellow
123213-03	Patch cord LC-ST DPX LSZH 9/125um L. 3 m	0,2dB-0,15dB	55dB	-10°C/+60°C	Yellow
123213-05	Patch cord LC-ST DPX LSZH 9/125um L. 5 m	0,2dB-0,15dB	55dB	-10°C/+60°C	Yellow
123213-10	Patch cord LC-ST DPX LSZH 9/125um L. 10 m	0,2dB-0,15dB	55dB	-10°C/+60°C	Yellow



## Fiber Patch Cord LC-SC Duplex



All the patch cords are designated and manufactured with an ISO9001 system. A complete line of cable assemblies for any telecommunications application. Each patch cord is factory-terminated and tested. Manufactured using quality ORCA cable and connectors. Available in 50/125  $\mu\text{m}$ , OM3 50/125  $\mu\text{m}$  and 62,5/125  $\mu\text{m}$  Multimode and Single-mode. Feature connectors with ceramic ferrules. Most standard cable assemblies are in stock for immediately ship, special configuration are available and we make quickly on request.

### Features

- Cable sheath LSZH
- Cable diameter 3.0 mm Twin Zip
- Buffer 0.9 mm Strip easy
- Ceramic Ferrule
- Machine polished providing high test quality with controlled end-face
- Test report printed on each cable assemblies label
- ROHS Compliant
- Other lengths are available on request

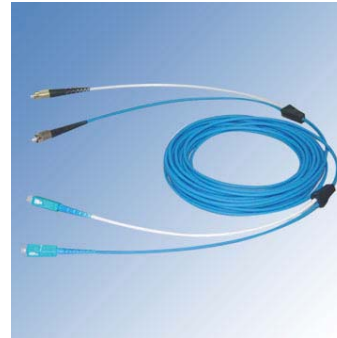
Part Number	Description	Insertion Loss typ (max)	Return Loss	Temp. Range	Color
123111-01	Patch cord LC-SC DPX LSZH 50/125um L. 1 m	0,3dB	45-50dB	-10°C/+60°C	Orange
123111-02	Patch cord LC-SC DPX LSZH 50/125um L. 2m	0,3dB	45-50dB	-10°C/+60°C	Orange
123111-03	Patch cord LC-SC DPX LSZH 50/125um L. 3m	0,3dB	45-50dB	-10°C/+60°C	Orange
123111-05	Patch cord LC-SC DPX LSZH 50/125um L. 5m	0,3dB	45-50dB	-10°C/+60°C	Orange
123111-10	Patch cord LC-SC DPX LSZH 50/125um L. 10m	0,3dB	45-50dB	-10°C/+60°C	Orange
123114-01	Patch cord LC-SC DPX LSZH 50/125um OM3 L. 1 m	0,3dB	45-50dB	-10°C/+60°C	Acqua
123114-02	Patch cord LC-SC DPX LSZH 50/125um OM3 L. 2 m	0,3dB	45-50dB	-10°C/+60°C	Acqua
123114-03	Patch cord LC-SC DPX LSZH 50/125um OM3 L. 3 m	0,3dB	45-50dB	-10°C/+60°C	Acqua
123114-05	Patch cord LC-SC DPX LSZH 50/125um OM3 L. 5 m	0,3dB	45-50dB	-10°C/+60°C	Acqua
123114-10	Patch cord LC-SC DPX LSZH 50/125um OM3 L. 10 m	0,3dB	45-50dB	-10°C/+60°C	Acqua
123112-01	Patch cord LC-SC DPX LSZH 62,5/125um L. 1 m	0,3dB	45-50dB	-10°C/+60°C	Grey
123112-02	Patch cord LC-SC DPX LSZH 62,5/125um L. 2 m	0,3dB	45-50dB	-10°C/+60°C	Grey
123112-03	Patch cord LC-SC DPX LSZH 62,5/125um L. 3 m	0,3dB	45-50dB	-10°C/+60°C	Grey
123112-05	Patch cord LC-SC DPX LSZH 62,5/125um L. 5 m	0,3dB	45-50dB	-10°C/+60°C	Grey
123112-10	Patch cord LC-SC DPX LSZH 62,5/125um L. 10 m	0,3dB	45-50dB	-10°C/+60°C	Grey
123113-01	Patch cord LC-SC DPX LSZH 9/125um L. 1 m	0,2dB-0,15dB	55dB	-10°C/+60°C	Yellow
123113-02	Patch cord LC-SC DPX LSZH 9/125um L. 2 m	0,2dB-0,15dB	55dB	-10°C/+60°C	Yellow
123113-03	Patch cord LC-SC DPX LSZH 9/125um L. 3 m	0,2dB-0,15dB	55dB	-10°C/+60°C	Yellow
123113-05	Patch cord LC-SC DPX LSZH 9/125um L. 5 m	0,2dB-0,15dB	55dB	-10°C/+60°C	Yellow
123113-10	Patch cord LC-SC DPX LSZH 9/125um L. 10 m	0,2dB-0,15dB	55dB	-10°C/+60°C	Yellow

## High Crush Resistance Fiber Patch Cord

The high crush resistance fiber patch cord are useful for high performance applications like industrial, military, mining and tunnel, security solutions, or intelligent building.

### Features

- High Crush Resistance (3000N/10cm)
- High tensile and stress coefficient
- High Mechanical and Thermal stability
- Flame retardant performance
- Optimized bending performance
- Cable diameter 3.2 mm Twin Zip
- Ceramic Ferrule
- Machine polished providing high test quality with controlled end-face
- Test reported printed on each cable assemblies label
- ROHS Compliant
- Available in OM1, OM2, OM3 and Os1 & Os2
- Available in singlemode and multimode, simplex and duplex version
- Other lengths and connectors are available on request



Part Number	Description	Insertion Loss typ (max)	Return Loss	Temp. Range	Color
181111-01	Patch Cord SC-SC LSZH DPX 50/125 µm HRC L. 1 m	0,3dB	45-50dB	-40°C/+85°C	blue
181111-02	Patch Cord SC-SC LSZH DPX 50/125 µm HRC L. 2 m	0,3dB	45-50dB	-40°C/+85°C	blue
181111-03	Patch Cord SC-SC LSZH DPX 50/125 µm HRC L. 3 m	0,3dB	45-50dB	-40°C/+85°C	blue
181111-05	Patch Cord SC-SC LSZH DPX 50/125 µm HRC L. 5 m	0,3dB	45-50dB	-40°C/+85°C	blue
181111-10	Patch Cord SC-SC LSZH DPX 50/125 µm HRC L. 10 m	0,3dB	45-50dB	-40°C/+85°C	blue
181114-01	Patch Cord SC-SC DPX 50/125 µm OM3 HRC L. 1 m	0,3dB	45-50dB	-40°C/+85°C	blue
181114-02	Patch Cord SC-SC DPX 50/125 µm OM3 HRC L. 2 m	0,3dB	45-50dB	-40°C/+85°C	blue
181114-03	Patch Cord SC-SC DPX 50/125 µm OM3 HRC L. 3 m	0,3dB	45-50dB	-40°C/+85°C	blue
181114-05	Patch Cord SC-SC DPX 50/125 µm OM3 HRC L. 5 m	0,3dB	45-50dB	-40°C/+85°C	blue
181114-10	Patch Cord SC-SC DPX 50/125 µm OM3 HRC L. 10 m	0,3dB	45-50dB	-40°C/+85°C	blue
181112-01	Patch Cord SC-SC LSZH DPX 62,5/125 µm HRC L. 1 m	0,3dB	45-50dB	-40°C/+85°C	blue
181112-02	Patch Cord SC-SC LSZH DPX 62,5/125 µm HRC L. 2 m	0,3dB	45-50dB	-40°C/+85°C	blue
181112-03	Patch Cord SC-SC LSZH DPX 62,5/125 µm HRC L. 3 m	0,3dB	45-50dB	-40°C/+85°C	blue
181112-05	Patch Cord SC-SC LSZH DPX 62,5/125 µm HRC L. 5 m	0,3dB	45-50dB	-40°C/+85°C	blue
181112-10	Patch Cord SC-SC LSZH DPX 62,5/125 µm HRC L. 10 m	0,3dB	45-50dB	-40°C/+85°C	blue
181113-01	Patch Cord SC-SC LSZH DPX 9/125 µm HRC L. 1 m	0,2dB-0,15dB	55dB	-40°C/+85°C	blue
181113-02	Patch Cord SC-SC LSZH DPX 9/125 µm HRC L. 2 m	0,2dB-0,15dB	55dB	-40°C/+85°C	blue
181113-03	Patch Cord SC-SC LSZH DPX 9/125 µm HRC L. 3 m	0,2dB-0,15dB	55dB	-40°C/+85°C	blue
181113-05	Patch Cord SC-SC LSZH DPX 9/125 µm HRC L. 5 m	0,2dB-0,15dB	55dB	-40°C/+85°C	blue
181113-10	Patch Cord SC-SC LSZH DPX 9/125 µm HRC L. 10 m	0,2dB-0,15dB	55dB	-40°C/+85°C	blue
183311-01	Patch Cord LC-LC LSZH DPX 50/125 µm HRC L. 1 m	0,3dB	45-50dB	-40°C/+85°C	blue
183311-02	Patch Cord LC-LC LSZH DPX 50/125 µm HRC L. 2 m	0,3dB	45-50dB	-40°C/+85°C	blue
183311-03	Patch Cord LC-LC LSZH DPX 50/125 µm HRC L. 3 m	0,3dB	45-50dB	-40°C/+85°C	blue
183311-05	Patch Cord LC-LC LSZH DPX 50/125 µm HRC L. 5 m	0,3dB	45-50dB	-40°C/+85°C	blue
183311-10	Patch Cord LC-LC LSZH DPX 50/125 µm HRC L. 10 m	0,3dB	45-50dB	-40°C/+85°C	blue
183314-01	Patch Cord LC-LC DPX 50/125 µm OM3 HRC L. 1 m	0,3dB	45-50dB	-40°C/+85°C	blue
183314-02	Patch Cord LC-LC DPX 50/125 µm OM3 HRC L. 2 m	0,3dB	45-50dB	-40°C/+85°C	blue
183314-03	Patch Cord LC-LC DPX 50/125 µm OM3 HRC L. 3 m	0,3dB	45-50dB	-40°C/+85°C	blue
183314-05	Patch Cord LC-LC DPX 50/125 µm OM3 HRC L. 5 m	0,3dB	45-50dB	-40°C/+85°C	blue
183314-10	Patch Cord LC-LC DPX 50/125 µm OM3 HRC L. 10 m	0,3dB	45-50dB	-40°C/+85°C	blue
183312-01	Patch Cord LC-LC LSZH DPX 62,5/125 µm HRC L. 1 m	0,3dB	45-50dB	-40°C/+85°C	blue

[continue]



[High Crush Resistance Fiber Patch Cord]							
Part Number	Description	Insertion Loss typ (max)	Return Loss	Temp. Range	Color		
183312-02	Patch Cord LC-LC LSZH DPX 62,5/125 µm HRC L. 2 m	0,3dB	45-50dB	-40°C/+85°C	blue		
183312-03	Patch Cord LC-LC LSZH DPX 62,5/125 µm HRC L. 3 m	0,3dB	45-50dB	-40°C/+85°C	blue		
183312-05	Patch Cord LC-LC LSZH DPX 62,5/125 µm HRC L. 5 m	0,3dB	45-50dB	-40°C/+85°C	blue		
183312-10	Patch Cord LC-LC LSZH DPX 62,5/125 µm HRC L. 10 m	0,3dB	45-50dB	-40°C/+85°C	blue		
183313-01	Patch Cord LC-LC LSZH DPX 9/125 µm HRC L. 1 m	0,2dB-0,15dB	55dB	-40°C/+85°C	blue		
183313-02	Patch Cord LC-LC LSZH DPX 9/125 µm HRC L. 2 m	0,2dB-0,15dB	55dB	-40°C/+85°C	blue		
183313-03	Patch Cord LC-LC LSZH DPX 9/125 µm HRC L. 3 m	0,2dB-0,15dB	55dB	-40°C/+85°C	blue		
183313-05	Patch Cord LC-LC LSZH DPX 9/125 µm HRC L. 5 m	0,2dB-0,15dB	55dB	-40°C/+85°C	blue		
183313-10	Patch Cord LC-LC LSZH DPX 9/125 µm HRC L. 10 m	0,2dB-0,15dB	55dB	-40°C/+85°C	blue		

## MPO Optical Fiber cassettes



Orca MPO cassettes are the wave of the future and several data-centers are already implementing this technology. One connector plugged into the back of the cassette and “fanout” to up to 24 connections (LC quad cassette only). MPO plug-and-play module cassettes are designed to fit into RAC and series fiber optic patch panels

### Features

- Cassette fiber polarity is pair-flipped (AB/BA)
- Cassettes with straight-through polarity (AB/AB) are available
- Cassettes have one MPO connection (12-fiber) or two MPO connections (24-fiber) on the back of each cassette
- Highest density option uses small form factor connectors (MT-RJ or LC)
- Cassettes house MPO one or two 12-fiber break-out assemblies
- Cassettes come pre-tested and ready for immediate use

Part Number	Description
178111-06	MPO cassettes Fiber 50/125um 1U - 1 x MPO (6 SC DPX)
178111-12	MPO cassettes Fiber 50/125um 1U - 2 x MPO (12 SC DPX)
178111-18	MPO cassettes Fiber 50/125um 1U - 3 x MPO (18 SC DPX)
178111-24	MPO cassettes Fiber 50/125um 1U - 4 x MPO (24 SC DPX)
178311-06	MPO cassettes Fiber 50/125um 1U - 1 x MPO (6 LC DPX)
178311-12	MPO cassettes Fiber 50/125um 1U - 2 x MPO (12 LC DPX)
178311-18	MPO cassettes Fiber 50/125um 1U - 3 x MPO (18 LC DPX)
178311-24	MPO cassettes Fiber 50/125um 1U - 4 x MPO (24 LC DPX)
178114-06	MPO cassettes Fiber 50/125um OM3 1U - 1 x MPO (6 SC DPX)
178114-12	MPO cassettes Fiber 50/125um OM3 1U - 2 x MPO (12 SC DPX)
178114-18	MPO cassettes Fiber 50/125um OM3 1U - 3 x MPO (18 SC DPX)
178114-24	MPO cassettes Fiber 50/125um OM3 1U - 4 x MPO (24 SC DPX)
178314-06	MPO cassettes Fiber 50/125um OM3 1U - 1 x MPO (6 LC DPX)
178314-12	MPO cassettes Fiber 50/125um OM3 1U - 2 x MPO (12 LC DPX)
178314-18	MPO cassettes Fiber 50/125um OM3 1U - 3 x MPO (18 LC DPX)
178314-24	MPO cassettes Fiber 50/125um OM3 1U - 4 x MPO (24 LC DPX)
178112-06	MPO cassettes Fiber 62,5/125um 1U - 1 x MPO (6 SC DPX)

[continue]

[MPO Optical Fiber cassettes]

Part Number	Description
178112-12	MPO cassettes Fiber 62,5/125um 1U - 2 x MPO (12 SC DPX)
178112-18	MPO cassettes Fiber 62,5/125um 1U - 3 x MPO (18 SC DPX)
178112-24	MPO cassettes Fiber 62,5/125um 1U - 4 x MPO (24 SC DPX)
178312-06	MPO cassettes Fiber 62,5/125um 1U - 1 x MPO (6 LC DPX)
178312-12	MPO cassettes Fiber 62,5/125um 1U - 2 x MPO (12 LC DPX)
178312-18	MPO cassettes Fiber 62,5/125um 1U - 3 x MPO (18 LC DPX)
178312-24	MPO cassettes Fiber 62,5/125um 1U - 4 x MPO (24 LC DPX)
178113-06	MPO cassettes Fiber 09/125um 1U - 1 x MPO (6 SC DPX)
178113-12	MPO cassettes Fiber 09/125um 1U - 2 x MPO (12 SC DPX)
178113-18	MPO cassettes Fiber 09/125um 1U - 3 x MPO (18 SC DPX)
178113-24	MPO cassettes Fiber 09/125um 1U - 4 x MPO (24 SC DPX)
178313-06	MPO cassettes Fiber 09/125um 1U - 1 x MPO (6 LC DPX)
178313-12	MPO cassettes Fiber 09/125um 1U - 2 x MPO (12 LC DPX)
178313-18	MPO cassettes Fiber 09/125um 1U - 3 x MPO (18 LC DPX)
178313-24	MPO cassettes Fiber 09/125um 1U - 4 x MPO (24 LC DPX)

## MPO Trunk Cable

**Features**

- Trunk cable fiber polarity is Pair-Flipped AB/BA
- Trunk cables with Pair Straight AB/BA polarity are available
- Pulling protect MPO terminations during installation
- Twelve fibers per MPO Plug
- Trunk cables come pre-tested and ready for installation
- 12 and 24 fiber MPO Trunk Cable meet or exceed the requirements of GR-409 Core and UL/NEC rating for Riser and Plenum applications
- Plenum Cables can be used in riser spaces
- Custom counts and lengths are available



Part Number	Description	Color
120811-01	Trunk Cable MPO-MPO multimodal 50/125um Lungh. 1m	Orange
128111-01	Fan-out Cable MPO-SC multimodal 50/125um Lungh. 1m	Orange
128211-01	Fan-out Cable MPO-ST multimodal 50/125um Lungh. 1m	Orange
128311-01	Fan-out Cable MPO-LC multimodal 50/125um Lungh. 1m	Orange
120814-01	Trunk Cable MPO-MPO multimodal 50/125 OM3um Lungh. 1m	Acqua
128114-01	Fan-out Cable MPO-SC multimodal 50/125 OM3um Lungh. 1m	Acqua
128214-01	Fan-out Cable MPO-ST multimodal 50/125 OM3um Lungh. 1m	Acqua
128314-01	Fan-out Cable MPO-LC multimodal 50/125 OM3um Lungh. 1m	Acqua
120812-01	Trunk Cable MPO-MPO multimodal 62/125um Lungh. 1m	Orange
128112-01	Fan-out Cable MPO-SC multimodal 62/125um Lungh. 1m	Orange
128212-01	Fan-out Cable MPO-ST multimodal 62/125um Lungh. 1m	Orange
128312-01	Fan-out Cable MPO-LC multimodal 62/125um Lungh. 1m	Orange
120813-01	Trunk Cable MPO-MPO singlemode 09/125um Lungh. 1m	Yellow
128113-01	Fan-out Cable MPO-SC singlemode 09/125um Lungh. 1m	Yellow
128213-01	Fan-out Cable MPO-ST singlemode 09/125um Lungh. 1m	Yellow
128313-01	Fan-out Cable MPO-LC singlemode 09/125um Lungh. 1m	Yellow
CVF-MPO-50	Supplementary Ribbon Fiber meter 50/125um for MPO	
CVF-MPO-503	Supplementary Ribbon Fiber meter 50/125um OM3 for MPO	

[continue]

[MPO Trunk Cable]		
Part Number	Description	Color
CVF-MPO-62	Supplementary Ribbon Fiber meter 62/125um multimode for MPO	
CVF-MPO-09	Supplementary Ribbon Fiber meter 09/125um multimode for MPO	



## Fiber Multimode Pigtail



All the pigtails are designed and manufactured with an ISO9001 system. A complete line of cable assemblies for any telecommunications application. Each pigtail is factory-terminated and tested. Manufactured using quality Orca cable and connectors. Available in 50/125 , OM3 50/125 and 62,5/125 Multimode and Single-mode Available connector styles include MT-RJ, SC, ST, LC and FC. Feature connectors with ceramic ferrules. Most standard cable assemblies are in stock for immediately shipping, special configurations are available and are quickly made on request. We quote also on custom cable assemblies. All components and the final product are designed and tested to conform the requirements of IEC 60874-07, CECC, Bellcore/Telcordia GR- 326(reduced), EIA/TIA 568, ISO/IEC 11801 2nd Ed., EN 50173, IEC60793-2-50 A1a, ITU-T G.651, IEC60793-2-10 A1a, EIA/TIA 492AAAB. All components are RoHS compliant and do not contain any restricted hazardous substances as detailed in RoHS 2002/95/EC.

### Features

- Ceramic Ferrule
- Semi-tight buffer
- 6pcs per unit
- Temperature - min/max range:-10°C to 65°C
- ROHS Compliant
- Other lengths are available on request



Part Number	Description
120101-02	Pigtail SC multimodal 50/125 length 2m
120201-02	Pigtail ST multimodal 50/125 length 2m
120411-F2	Pigtail MT-RJ female DPX MM 50/125 L.2m
120411-M2	Pigtail MT-RJ male DPX MM 50/125 L.2m
120301-02	Pigtail LC multimodal 50/125 length 2m
120501-02	Pigtail FC multimodal 50/125 length 2m
120102-02	Pigtail SC multimodal 62,5/125 length 2m
120202-02	Pigtail ST multimodal 62,5/125 length 2m
120412-F2	Pigtail MT-RJ female DPX MM 62,5/125 L.2m
120412-M2	Pigtail MT-RJ male DPX MM 62,5/125 L.2m

[continue]

**[Fiber Multimode Pigtail]**

Part Number	Description
120302-02	Pigtail LC multimodal 62,5/125 length 2m
120502-02	Pigtail FC multimodal 62/125 length 2m
120104-02	Pigtail SC multimodal 50/125 OM3 length 2m
120204-02	Pigtail ST multimodal 50/125 OM3 length 2m
120414-F2	Pigtail MT-RJ female DPX MM 50/125 OM3 L.2m
120414-M2	Pigtail MT-RJ male DPX MM 50/125 OM3 L.2m
120304-02	Pigtail LC multimodal 50/125 OM3 length 2m



## Fiber Singlemode Pigtail

All the pigtails are designed and manufactured with an ISO9001 system. A complete line of cable assemblies for any telecommunications application. Each pigtail is factory-terminated and tested. Manufactured using quality Orca cable and connectors. Available in 50/125 , OM3 50/125 and 62,5/125 Multimode and Single-mode Available connector styles include MT-RJ, SC, ST, LC and FC. Feature connectors with ceramic ferrules. Most standard cable assemblies are in stock for immediately shipping, special configurations are available and are quickly made on request. We quote also on custom cable assemblies. All components and the final product are designed and tested to conform the requirements of IEC 60874-07, CECC, Bellcore/Telcordia GR- 326(reduced), EIA/TIA 568, ISO/IEC 11801 2nd Ed., EN 50173, IEC60793-2-50 A1a, ITU-T G.651, IEC60793-2-10 A1a, EIA/TIA 492AAAB. All components are RoHS compliant and do not contain any restricted hazardous substances as detailed in RoHS 2002/95/EC.



**Features**

- Ceramic Ferrule
- Semi-tight buffer
- 6pcs per unit
- Temperature - min/max
- range:-10°C to 65°C
- ROHS Compliant
- Other lengths are available on request

Part Number	Description
120103-02	Pigtail SC singlemode 9/125 length 2m
120203-02	Pigtail ST singlemode 9/125 length 2m
120413-F2	Pigtail MT-RJ female DPX MM 9/125 L.2m
120413-M2	Pigtail MT-RJ male DPX MM 9/125 L.2m

[continue]

**[Fiber Singlemode Pigtail]**

Part Number	Description
120303-02	Pigtail LC singlemode 9/125 length 2m
120503-02	Pigtail FC singlemode 9/125 length 2m



## Optical Fiber Accessories

The Orca offer includes also a large numbers of cleaning accessories for the fibers optic works. Most tools can also be purchased separately.



Part Number	Description
150412-00	Fan-Out 4-12 fiber
150024-00	Fan-Out 24 fiber
150001-01	Pulling eye
150001-00	Yellow protecting tube. ( 3mm diameter)
170600-12	Splice trays 12 fiber
150000-40	Heat shrink tube 1.40 mm
150000-60	Heat shrink tube 1.60 mm
150002-00	Fiber optics wipe (280 units)
150003-00	Cleansing tissue for optic fiber (50 units)
150004-00	Cotton swabs (50 units per pack)
150005-00	Epoxy applicaiton syringe 3ml
150006-00	Quick cure adhesive 5 min, 2 grams (25 to 35 connectors)
150007-00	Quick cure adhesive 5 min, 4 grams (50 to 70 connectors)
150008-00	EPO TEK bi-pack epoxy
150009-00	Anaerobic epoxy with reagent 30 ml
150010-00	Fiber optics cleaning (o,5 lt)
150011-00	Polishing film 1um 5xA4 sheets
150012-00	Polishing film 5um 5xA4 sheets
150013-00	Polishing film 12um 5xA4 sheets

[continue]

[Optical Fiber Accessories]

Part Number	Description
150014-00	Polishing film 0,3um 5xA4 sheets
150015-00	3M Diamond Polishing film 6"x6" sheet



## Optical Fiber Tools

The Orca's fiber tools includes crimp, cleavers, strippers and microscopes. All the tools can be purchased separately. Orca could be a good choice in the fiber optic industry fo offering the best value on tool kits.



Part Number	Description
160001-00	Microscope 100X - universal, ST, FC, SC
160002-00	Microscope 200X - professional - universal, ST, FC, SC
160003-00	Microscope 400X - professional - universal, ST, FC, SC
160004-00	Adapter for professional microscope with lc connector
160005-00	Continuity tester for fiber st, sc, fc (up to 2,5 Km)
160006-00	Laser fault locator
160007-00	Universal fiber optic cleaving tool
160008-00	Miller fiber stripper 250 um and 900um jacket
160009-00	Miller fiber stripper 3mm, 250 um and 900um jacket
160010-00	Cable stripper 3mm
160011-00	Buffer tube stripper (removes up to 5,5 mm )
160011-01	Buffer tube stripper (removes up to 3,5 mm )
160012-00	Replacement blades for Buffer tube stripper (3 pz.)
160013-00	Fiber optical disposal unit
160014-00	Professional Miller cutter
160015-00	Professional kevlar cutter (carbon steel)
160016-00	Kevlar Cutter Miller
160017-00	Scribe tool with reversibile blade
160018-00	Scribe tool with reversibile blade fiber SM & MM



[continue]

[Optical Fiber Tools]

Part Number	Description
160022-00	70 mm cable cutter
160023-00	Professional polishing disc ST, SC, FC
160024-00	Professional polishing disc LC
160025-00	Connector termination tool kit for sc, st and fc connectors
160026-00	Epoxy curing oven for 24 connectors
160027-00	Kit upgrade connectors SC, ST AMP
160028-00	Kit M-RJ, Light Crimp Plus SC, ST



# Copper System

## Telephone Copper System

The ORCA Telephone System is composed of connection and disconnection blocks, along with its accessories, and is suitable for a central distribution or permutation network. The accessories include integrated protection, label holders and module support. The ORCA Telephone System complies with all of the performance requirements for applications such as Ethernet 10BASE T, token ring 4/16 Mbits/s, Analog Telephony, ISDN



### Features

- Side cable manager
- 10-pair numbered block
- Screw covered box available in 30,50 and 100 pairs
- Protection module available
- Temperature min/max: -storage -40°C to 90° -operation
- -20°C to 80°C
- Category 3E 10-pair Block numbered from 1 to 10 shown on front side
- Connectors made with brass alloy plated in silver.

Part Number	Description
651101-10	Ten-pair disconnect block
651102-10	Ten-pair connect block
651103-10	Earth module 10 pair
651104-10	Protection system 10 pair 230 V 3-pole pre-charged
651104-01	3 pole protection 230V
651104-02	Integrated protection 1 pair
651105-10	Label holder for module 10 pair
651106-10	Label holder for cabinet 10 pair
651106-01	Disconnect plug 1 pair (red) min 100 pcs
651107-10	Module support 10 pair (holds up to 10 stripes)
651108-10	Transparent module 10 pair
651109-02	Patch cord 2-pole length 2m (connection)
651110-02	Patch cord 2-pole length 2m (disconnect)
651111-02	Connect plug 2-pole
651115-50	Heat shrink tubing for copper cables 10-50cp aluminum canister
651115-E1	Heat shrink tubing for copper cables 50-150cp aluminum canister
651115-E4	Heat shrink tubing for copper cables 200-400 cp aluminum canister
651115-E6	Heat shrink tubing for copper cables 400-600 cp aluminum canister
651115-F1	Heat shrink tubing for copper cables 600-1000 cp aluminum canister
651112-30	Distribution box 30 cp (max 3 modules not included) screw cover
651112-50	Distribution box 50 cp (max 5 modules not included) screw cover
651112-E1	Distribution box 100 cp (max 10 modules 10 cp, not included)
651113-30	Distribution box 30 cp (max 3 modules not included) external
651113-50	Distribution box 50 cp (max 5 modules not included) external
651113-E1	Distribution box 100 cp (max 10 modules not included) external
651114-E1	Distribution box 100 cp (max 10 modules not included) external
651114-E2	Distribution box 200 cp (max 20 modules not included) metallic
651114-E4	Distribution box 400 cp (max 40 modules not included) metallic

[continue]



[Telephone Copper System]	
Part Number	Description
651116-02	Connector UY, 2 conductors with gel, OD 1,52, max cond. 0,4-0,7mm
651117-02	Connector UY2, 2 conductors with gel, OD 1,52, max cond. 0,4-0,7mm
651118-03	Connector UY, 3 conductors with gel, OD 1,52, max cond. 0,4-0,3mm



## Stranded Lan Cable



The Orca stranded conductor 2/4 pair UTP patch cable is highly flexible easy to use and category 5E and 6 compliant, ideal for the manufacture of bespoke cables

### Features

- Category 3,5E,6 Compliant
- 26 AWG stranded conductors



Part Number	Description	Packaging	Color
211011-00	UTP stranded Lan cable Lan (1 pair for Cat3 patch cords)	100mt per box	Grey
211011-01	UTP stranded Lan cable Lan (2 pairs for Cat3 patch cords)	100mt per box	Grey
211012-07	UTP stranded Lan cable Lan (4 pairs for Cat5E patch cords)	305mt per box	Grey
211013-07	UTP stranded Lan cable Lan (4 pairs for Cat6 patch cords)	305mt per box	Grey
211212-07	FTP stranded Lan cable Lan (4 pairs for Cat5E patch cords)	305mt per box	Grey

## Telephone Cable

The Orca Phone Wire is flat satin and available in 100 mt per box



Part Number	Description	Color	Type
311200-08	8 conductors telephone wire	Black	Flat Satin
311200-06	6 conductors telephone wire	Black	Flat Satin
311200-04	4 conductors telephone wire	Black	Flat Satin



## Internal Telephone Wire

The Orca Phone Cable is used for internal connection of telephone systems and other communications equipment. Insulated and sheathed in PVC, these cables offer an extremely cost effective general signal cable for fixed installation. Standard sheath colour is white although some sizes are available in black or grey.

### Features

- Choise of reel size
- Low Smoke and fume as standard
- An Earth conductor of 1.38mm plain copper si included where shown



Part Number	Description	Color
312009-00	0,6mm Twisted pair phone wire	White/ Green
312008-00	0,6mm Twisted pair phone wire	White/ Yellow
312007-00	0,6mm Twisted pair phone wire	White/ Red
312006-00	0,6mm Twisted pair phone wire	White/ Blue
312010-00	Internal telephone Cable TR 1 pairs x 0,6 TELECOM ITALIA	
312010-01	1 pair internal telephone cable TR	
312010-02	2 pairs internal telephone cables TR + Earth CW1308B	
312010-03	3 pairs internal telephone cables TR	
312010-06	6 pairs internal telephone cables TR	
312010-11	11 pairs internal telephone cables TR	
312010-16	16 pairs internal telephone cables TR	
312010-21	21 pairs internal telephone cables TR	
312010-26	26 pairs internal telephone cables TR	

[continue]

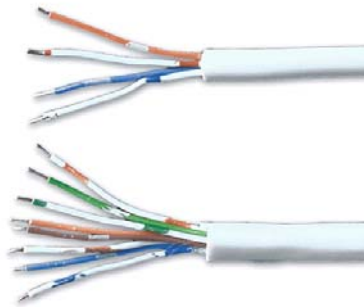


[Internal Telephone Wire]

Part Number	Description	Color
312010-31	31 pairs internal telephone cables TR	
312010-50	51 pairs internal telephone cables TR	
312010-E1	101 pairs internal telephone cables TR	



## External Telephone Wire



The Orca Phone Cable is used for external connection of telephone systems and other communications equipment.

**Features**

- Multipair external telephone cable
- Twisted pairs colour coded
- BT type CW1308
- PVC Insulated
- Low Smoke and fume cable



Part Number	Description
312020-02	2 pairs external telephone cables TEGHR
312020-06	6 pairs external telephone cables TEGHR
312020-10	10 pairs external telephone cables TEGHR
312020-20	20 pairs external telephone cables TEGHR
312020-30	30 pairs external telephone cables TEGHR
312020-50	50 pairs external telephone cables TEGHR
312020-E0	100 pairs external telephone cables TEGHR

## Voice Telephone Products

The Telephone Patch Panel is equipped with an integrated plate for a tie wrap strain relief for easy front access. The Telephone Patch Panel is based on 19" frame dimensions. It is easy to manage thanks to the cable guide tie wrap support. The use of patch guides, allow an orderly arrangement of cables. The 25/50 ports Patch Panel are compliant with Category 3 requirements. All components and the final product are designed and tested to conform the requirements of EIA-TIA-568-B.2.



### Features

- Punch down from the top for easy connection from the front of cabinet
- Supplied with fixing
- Black colour available
- 19", 1U telephone panel with 25 ports
- 19", 1U telephone panel with 50 ports
- Jack life min. 1000 re-insertions
- IDC life up to 50 re-insertions
- Max of two wires per IDC contact
- Wire gauge 22-24 AWG

Part Number	Description	Color
271120-50	Telephone Panel 50 port 1U 19" Rack	black
271120-25	Telephone Panel 25 port 1U 19" Rack	black
231130-00	RJ11 Insert Cat 3 color white UTP (screw connection)	white



## Category 5E RJ45 insert



These slim profile jacks are compatible with ORCA faceplates. Universal wiring labels permit termination to either T568A or T568B wiring patterns. Cables may be dressed at either 180° or 90° for added flexibility at various outlet locations. The strain relief may also be used to reduce stress on cable at point of termination. Available on request both black and white

### Features

- Modular Jack:750 Mating cycles
- 110 block:150 termination cycles
- IDC contacts-phosphorous bronze with nichel plating
- Housing material:PL UL94 V-0
- Current rating:1,5A
- Voltage rating: 125VAC
- Insulation resistance: 1000 Mohm min 500 VDC
- Wire: 24-26 AWG
- Other colour are available on request



Part Number	Description	Color
232120-00	RJ45 Insert Cat 5E UTP	black
232130-00	RJ45 Insert Cat 5E UTP	white
232220-00	RJ45 Insert Cat 5E FTP	metal

## Category 5E Patch Panels

The ORCA Enhanced Category 5 System complies with all of the performance requirements for current and proposed applications such as Gigabit Ethernet, 100BASETx, token ring, 155 Mbps ATM, 100 Mbps TP-PMD, ISDN, analog (broadband, baseband) and digital video and analog and digital (VoIP) voice. These slim profile jacks are compatible with ORCA faceplates. Universal wiring labels permit termination to either T568A or T568B wiring patterns. Cables may be dressed at either 180° or 90° for added flexibility at various outlet locations. The strain relief may also be used to reduce stress on cable at point of termination



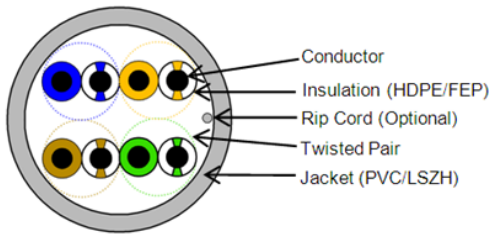
### Features

- 1 or 2 units high
- Holds up to 48 jacks
- Label/Icon holder
- All components and the final product are designed and tested to conform the requirements of TIA/EIA-568-B.2

Part Number	Description	Color
272120-24	Loaded panel Cat5E 24 ports UTP iconable	black
272120-48	Loaded panel Cat5E 48 ports UTP iconable	black
272220-24	Loaded panel Cat5E 24 ports FTP iconable	Black



## Category 5E UTP Cable



The Orca solid conductor 4 pair UTP cable comes with a low smoke zero halogen outer sheath. When installing simply remove the perforated letter carton strip from the box front and pull two cables as normal from the box. Where necessary the outer carton can be discarded and the inner - standard 305mtr reelex boxes - utilised.

### Features

- UL,ETL,DELTA Verified for guaranteed performance
- Supports Fast Ethernet , Giga-bit Ethernet , 155 Mb/s ATM , Multimedia
- All accepted design for global commercial network installation
- Simplified structured cabling solution preserving long-term network investment
- Every master reel is tested for electrical performance compliance
- Specialized print legend contains footage marking from 1000' to 0', metric from 305 to 0m and "DUAL MARKING" footage and metric

Part Number	Description
212012-02	Cat. 5E UTP Cable 24 AWG 4cp LSZH
211012-02	Cat. 5E UTP Cable 24 AWG 4cp PVC



## Category 5E FTP Cable



The Orca Solid Conductor 4 pair FTP is a high performance Category 5e compliant cable suitable for installations where high levels of EMI and RFI could be present. Category 5e compliant 305 metre fast feed box 100% aluminium foil tape screen LSZH outer sheath

### Features

- UL,ETL,DELTA Verified for guaranteed performance
- Supports Fast Ethernet , Giga-bit Ethernet , 155 Mb/s ATM , Multimedia
- All accepted design for global commercial network installation
- Simplified structured cabling solution preserving long-term network investment
- Every master reel is tested for electrical performance compliance
- Specialized print legend contains footage marking from 1000' to 0', metric from 305 to 0m and "DUAL MARKING" footage and metric

Part Number	Description
212212-02	Cat.5E FTP Cable 24 AWG 4cp LSZH



## Category 6 RJ45 insert

Category 6 Series jacks exceed TIA/EIA-568-B.2 requirements for Category 6 component performance. The ORCA Category 6 System complies with all of the performance requirements for current and proposed applications such as Gigabit Ethernet, 100BASETx, token ring, 155 Mbps ATM, 100 Mbps TP-PMD, ISDN, analog (broadband, baseband) and digital video and analog and digital (VoIP) voice. These slim profile jacks are compatible with ORCA faceplates. Unshielded Modular jacks are unkeyed, 4 pair and meet the Category 6 performance requirements. Modular jacks shall be terminated using 110-style pc board connectors, colour coded for both T568A and T568B wiring. The 110-style connectors shall be capable of terminating 22-24 AWG solid wire. Each jack shall be provided with a bend-limiting strain relief. Each jack shall be wired to T568A or T568B. Available both black and white



**Features**

- Modular Jack:750 Mating cycles
- 110 block:150 termination cycles
- IDC contacts-phosphorous bronze with nichel plating
- Housing material:PL UL94 V-0
- Current rating:1,5A
- Voltage rating: 125VAC
- Insulation resistance: 1000 Mohm min 500 VDC
- Wire: 24-26 AWG
- Other colour are available on request

Part Number	Description	Color
233120-00	RJ45 Insert Cat 6 UTP 8 pos.	black
233130-00	RJ45 Insert Cat 6 UTP 8 pos	white
233220-00	RJ45 Insert Cat 6 FTP 8 pos.	metal



## Category 6 Patch Panels

The ORCA Category 6 System complies with all of the performance requirements for current and proposed applications such as Gigabit Ethernet, 100BASETx, token ring, 155 Mbps ATM, 100 Mbps TP-PMD, ISDN, analog (broadband, baseband) and digital video and analog and digital (VoIP) voice. These slim profile jacks are compatible with ORCA faceplates. Universal wiring labels permit termination to either T568A or T568B wiring patterns. Cables may be dressed at either 180° or 90° for added flexibility at various outlet locations. The strain relief may also be used to reduce stress on cable at point of termination.



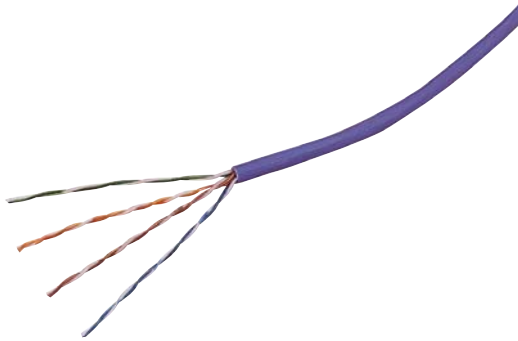
**Features**

- 1or 2 units high
- Holds up to 48 jacks
- Label/icon holder
- All components and the final product are designed and tested to conform the requirements of TIA/EIA-568-B.4

Part Number	Description	Color
273220-24	Loaded panel Cat6 24 ports UTP iconable	black
273120-24	Loaded panel Cat6 24 ports FTP iconable	black



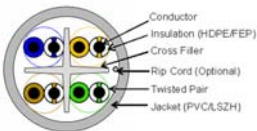
## Category 6 UTP Cable



The ORCA Category 6 System complies with all of the performance requirements for current and proposed applications such as Gigabit Ethernet, 100BASETx, token ring, 155 Mbps ATM, 100 Mbps TP-PMD, ISDN, analog (broadband, baseband) and digital video and analog and digital (VoIP) voice. These slim profile jacks are compatible with ORCA faceplates. Universal wiring labels permit termination to either T568A or T568B wiring patterns. Cables may be dressed at either 180° or 90° for added flexibility at various outlet locations. The strain relief may also be used to reduce stress on cable at point of termination.

### Features

- UL,ETL,DELTA Verified for guaranteed performance
- Capable of handling full broadband and baseband video signals
- High flame retardant grade of the cable is protected propagation of fire (Plenum Cable)
- Addition of balance requirements improves cable performance
- Every master reel is tested
- for electrical performance compliance.
- Specialized print legend contains footage marking from 1000' to 0', metric from 305 to 0m and "DUAL MARKING" footage and metric
- Every box packaging is included "Plastic reel", so wire pulls through box opening for easy access



Part Number	Description
212013-02	Cat. 6 UTP Cable 24 AWG , 4cp LSZH

## Category 6 FTP Cable

The ORCA Category 6 System complies with all of the performance requirements for current and proposed applications such as Gigabit Ethernet, 100BASETx, token ring, 155 Mbps ATM, 100 Mbps TP-PMD, ISDN, analog (broadband, baseband) and digital video and analog and digital (VoIP) voice. These slim profile jacks are compatible with ORCA faceplates. Universal wiring labels permit termination to either T568A or T568B wiring patterns. Cables may be dressed at either 180° or 90° for added flexibility at various outlet locations. The strain relief may also be used to reduce stress on cable at point of termination.



### Features

- UL,ETL,DELTA Verified for guaranteed performance
- Capable of handling full broadband and baseband video signals
- High flame retardant grade of the cable is protected propagation of fire (Plenum Cable)
- Addition of balance requirements improves cable performance
- Every master reel is tested for electrical performance compliance.
- Specialized print legend contains footage marking from 1000' to 0', metric from 305 to 0m and "DUAL MARKING" footage and metric
- Every box packaging is included "Plastic reel", so wire pulls through box opening for easy access

Part Number	Description
212213-02	Cat. 6 FTP Cable 24 AWG , 4cp LSZH

## Category 5E UTP Cable double sheath for outdoor use

### Features

- Category 5E Compliant
- External Grade
- double sheaths LSZH/PEHD
- 500 mt per box



Part Number	Description	Color
211212-02	Category 5E Unshielded Cable double sheaths GR4 for outdoor use	black

## Data Cabling Accessories

The ORCA Accessories are made to help with the organization of any copper or fibre system. Easy to install in any rack, they maintain the system organized and of easy access for the technicians. All ORCA accessories are RoHs compliant



Part Number	Description	Color
570124-24	Cable support bar for panel 110Connect	Black
550090-00	Cantilever shelf 2U 400mm 25Kg	Black
550080-00	Cantilever shelf 2U 250mm 25Kg	Black
550230-00	Kit 50 screw , nuts and cu washer	Black
550230-01	Kit 50 screw and nuts	Black
550250-00	Unloaded panel for BNC 32 ports 1U	Black
550260-00	Unloaded panel N3 32 ports 1U	Black
550270-00	Bracket left and right cable management 1U	Black
550280-00	Bracket with ring left and right cable management 1U	Black
550290-00	Bracket with ring left and right end cable management 1U	Black
570025-05	5 rings in PVC	Black
571045-05	Cable management black 1U, with 5 short rings in metal	Black
571035-05	Cable management black 1U, with 5 long rings in metal	Black
570121-24	Unloaded panel for Jack type AMP SL, Toolless iconable	Black
570122-24	Unloaded panel for Jack UTP ORCA 24 ports with cable suport	Black
570123-24	Unloaded panel for Jack UTP ORCA 24 ports	Black
271200-1	19 " panel XC-1unit for 100 pairs Cat5E	Black
272200-1	19 " panel XC-2units for 100 pairs Cat5E	Black



## Cat.3 Patch Cords RJ45-RJ45

ORCA Category 3 telephone patch Cords are factory terminated, providing the quality required to support your channel requirements. They are fully booted. They offer a high performance alternative to satin modular line cords where crosstalk, EMI, or distance may be considerations



Part Number	Description	Color
226109-A0	Patch cords Cat. 3 RJ45/RJ45 1 pair L. 0,5 meter	Green
226109-01	Patch cords Cat. 3 RJ45/RJ45 1 pair L. 1 meter	Green
226109-A1	Patch cords Cat. 3 RJ45/RJ45 1 pair L. 1,5 meter	Green
226109-02	Patch cords Cat. 3 RJ45/RJ45 1 pair L. 2 meter	Green
226109-03	Patch cords Cat. 3 RJ45/RJ45 1 pair L. 3 meter	Green
226109-05	Patch cords Cat. 3 RJ45/RJ45 1 pair L. 5 meter	Green
226106-A0	Patch cords Cat. 3 RJ45/RJ45 1 pair L. 0,5 meter	Blue
226106-01	Patch cords Cat. 3 RJ45/RJ45 1 pair L. 1 meter	Blue
226106-A1	Patch cords Cat. 3 RJ45/RJ45 1 pair L. 1,5 meter	Blue
226106-02	Patch cords Cat. 3 RJ45/RJ45 1 pair L. 2 meter	Blue
226106-03	Patch cords Cat. 3 RJ45/RJ45 1 pair L. 3 meter	Blue
226106-05	Patch cords Cat. 3 RJ45/RJ45 1 pair L. 5 meter	Blue
226107-A0	Patch cords Cat. 3 RJ45/RJ45 1 pair L. 0,5 meter	Red
226107-01	Patch cords Cat. 3 RJ45/RJ45 1 pair L. 1 meter	Red
226107-A1	Patch cords Cat. 3 RJ45/RJ45 1 pair L. 1,5 meter	Red
226107-02	Patch cords Cat. 3 RJ45/RJ45 1 pair L. 2 meter	Red
226107-03	Patch cords Cat. 3 RJ45/RJ45 1 pair L. 3 meter	Red
226107-05	Patch cords Cat. 3 RJ45/RJ45 1 pair L. 5 meter	Red
226108-A0	Patch cords Cat. 3 RJ45/RJ45 1 pair L. 0,5 meter	Yellow
226108-01	Patch cords Cat. 3 RJ45/RJ45 1 pair L. 1 meter	Yellow
226108-A1	Patch cords Cat. 3 RJ45/RJ45 1 pair L. 1,5 meter	Yellow
226108-02	Patch cords Cat. 3 RJ45/RJ45 1 pair L. 2 meter	Yellow
226108-03	Patch cords Cat. 3 RJ45/RJ45 1 pair L. 3 meter	Yellow
226108-05	Patch cords Cat. 3 RJ45/RJ45 1 pair L. 5 meter	Yellow

## Cat5E Patch Cords RJ45-XC



ORCA Category 5E patch Cords are factory terminated, providing the quality required to support your channel requirements. They are fully booted. They offer a high performance alternative to satin modular line cords where crosstalk, EMI, or distance may be considerations. Cable consists of pairs of 24 AWG (0.51mm) wire, each four pair twisted at a different lay length.

### Features

- Patch Cord 110XC to RJ-45 universal wiring
- 1/2/4 Pair stranded U/UTP cable, AWG 24 conductors, PVC sheath

Part Number	Description	Color
222101-01	Patch Cords Cat5e 1 pair 110XC-RJ45 UTP L. 1mr	Grey
222101-02	Patch Cords Cat5e 1 pair 110XC-RJ45 UTP L. 2mr	Grey
222101-03	Patch Cords Cat5e 1 pair 110XC-RJ45 UTP L. 3mr	Grey
222102-01	Patch Cords Cat5e 2 pairs 110XC-RJ45 UTP L. 1mr	Grey
222102-02	Patch Cords Cat5e 2 pairs 110XC-RJ45 UTP L. 2mr	Grey
222102-03	Patch Cords Cat5e 2 pairs 110XC-RJ45 UTP L. 3mr	Grey
222104-01	Patch Cords Cat5e 4 pairs 110XC-RJ45 UTP L. 1mr	Grey
222104-02	Patch Cords Cat5e 4 pairs 110XC-RJ45 UTP L. 2mr	Grey
222104-03	Patch Cords Cat5e 4 pairs 110XC-RJ45 UTP L. 3mr	Grey
222105-01	Patch Cords Cat5E 1 pair 110XC-110XC UTP L. 1mr	Grey
222105-02	Patch Cords Cat5E 1 pair 110XC-110XC UTP L. 2mr	Grey
222105-03	Patch Cords Cat5E 1 pair 110XC-110XC UTP L. 3mr	Grey

## UTP and FTP Cat.5E Patch Cords RJ45-RJ45



ORCA Category 5e patch Cords are factory terminated, providing the quality required to support your channel requirements. They are fully booted. They offer a high performance alternative to satin modular line cords where crosstalk, EMI, or distance may be considerations. Cable consists of pairs of 24 AWG (0.51mm) wire, each four pair twisted at a different lay length. All components and the final product are designed and tested to conform the requirements of ISO/IEC 11801, EIA/TIA 568B

### Features

- Horizontal Distribution & Backbone Cabling
- 4/16 Mbps Token Ring (IEEE 802.5)
- 10/100/1000 BASE-T (IEEE 802.3)
- 155 Mbps ATM
- 100Mbps TP PMD
- ISDN, ADSL
- ROHS Compliant
- Other lengths are available on request



Part Number	Description	Color
222140-A0	Patch cord Cat5E UTP L. 0,5m	Grey
222140-01	Patch cord Cat5E UTP L. 1m	Grey
222140-A1	Patch cord Cat5E UTP L. 1.5m	Grey

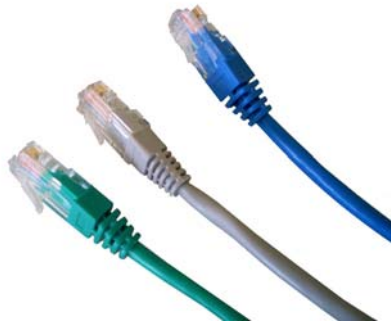
[continue]

[UTP and FTP Cat.5E Patch Cords RJ45-RJ45]

Part Number	Description	Color
222140-02	Patch cord Cat5E UTP L. 2m	Grey
222140-03	Patch cord Cat5E UTP L. 3m	Grey
222140-05	Patch cord Cat5E UTP L. 5m	Grey
222140-10	Patch cord Cat5E UTP L. 10m	Grey
222140-15	Patch cord Cat5E UTP L. 15m	Grey
222240-A0	Patch cord Cat5E FTP L. 0,5m	Grey
222240-01	Patch cord Cat5E FTP L. 1m	Grey
222240-02	Patch cord Cat5E FTP L. 2m	Grey
222240-03	Patch cord Cat5E FTP L. 3m	Grey
222240-05	Patch cord Cat5E FTP L. 5m	Grey
222240-10	Patch cord Cat5E FTP L. 10m	Grey
222240-15	Patch cord Cat5E FTP L. 15m	Grey
222170-A0	Patch cord Cat5E UTP L. 0,5m	Red
222170-01	Patch cord Cat5E UTP L. 1m	Red
222170-02	Patch cord Cat5E UTP L. 2m	Red
222170-03	Patch cord Cat5E UTP L. 3m	Red
222170-05	Patch cord Cat5E UTP L. 5m	Red
222170-10	Patch cord Cat5E UTP L. 10m	Red
222170-15	Patch cord Cat5E UTP L. 15m	Red
222160-A0	Patch cord Cat5E UTP L. 0,5m	Blue
222160-01	Patch cord Cat5E UTP L. 1m	Blue
222160-02	Patch cord Cat5E UTP L. 2m	Blue
222160-03	Patch cord Cat5E UTP L. 3m	Blue
222160-05	Patch cord Cat5E UTP L. 5m	Blue
222160-10	Patch cord Cat5E UTP L. 10m	Blue
222160-15	Patch cord Cat5E UTP L. 15m	Blue
222190-A0	Patch cord Cat5E UTP L. 0,5m	Green
222190-01	Patch cord Cat5E UTP L. 1m	Green
222190-02	Patch cord Cat5E UTP L. 2m	Green
222190-03	Patch cord Cat5E UTP L. 3m	Green
222190-05	Patch cord Cat5E UTP L. 5m	Green
222190-10	Patch cord Cat5E UTP L. 10m	Green
222190-15	Patch cord Cat5E UTP L. 15m	Green
222180-A0	Patch cord Cat5E UTP L. 0,5m	Yellow
222180-01	Patch cord Cat5E UTP L. 1m	Yellow
222180-02	Patch cord Cat5E UTP L. 2m	Yellow
222180-03	Patch cord Cat5E UTP L. 3m	Yellow
222180-05	Patch cord Cat5E UTP L. 5m	Yellow
222180-10	Patch cord Cat5E UTP L. 10m	Yellow
222180-15	Patch cord Cat5E UTP L. 15m	Yellow



## UTP And FTP Cat.6 Patch Cords RJ45-RJ45



ORCA Category 6 Patch Cords are factory terminated, providing the quality required to support your channel requirements. They are fully booted. They offer a high performance alternative to satin modular line cords where crosstalk, EMI, or distance may be considerations. Cable consists of pairs of 24 AWG (0.51mm) wire, each four pair twisted at a different lay length. All components and the final product are designed and tested to conform the requirements of ISO/IEC 11801, EIA/TIA 568-B.2-1

### Features

- Horizontal Distribution & Backbone Cabling
- 4/16 Mbps Token Ring (IEEE 802.5)
- 10/100/1000 BASE-T (IEEE 802.3)
- 155 Mbps ATM
- 100Mbps TP PMD
- ISDN, ADSL
- ROHS Compliant
- Other lengths are available on request

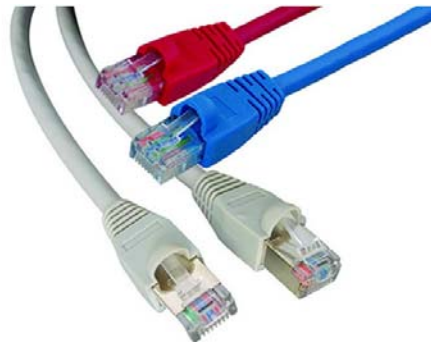


Part Number	Description	Color
223140-A0	Patch cord Cat6 UTP L. 0,5m	Grey
223140-01	Patch cord Cat6 UTP L. 1m	Grey
223140-A1	Patch cord Cat6 UTP L. 1,5m	Grey
223140-02	Patch cord Cat6 UTP L. 2m	Grey
223140-03	Patch cord Cat6 UTP L. 3m	Grey
223140-05	Patch cord Cat6 UTP L. 5m	Grey
223140-10	Patch cord Cat6 UTP L. 10m	Grey
223140-15	Patch cord Cat6 UTP L. 15m	Grey
223240-A0	Patch cord Cat6 FTP L. 0,5m	Grey
223240-01	Patch cord Cat6 FTP L. 1m	Grey
223240-A1	Patch cord Cat6 FTP L. 1,5m	Grey
223240-02	Patch cord Cat6 FTP L. 2m	Grey
223240-03	Patch cord Cat6 FTP L. 3m	Grey
223240-05	Patch cord Cat6 FTP L. 5m	Grey
223240-10	Patch cord Cat6 FTP L. 10m	Grey
223240-15	Patch cord Cat6 FTP L. 15m	Grey
223170-A0	Patch cord Cat6 UTP L. 0,5m	Red
223170-01	Patch cord Cat6 UTP L. 1m	Red
223170-02	Patch cord Cat6 UTP L. 2m	Red
223170-03	Patch cord Cat6 UTP L. 3m	Red
223170-05	Patch cord Cat6 UTP L. 5m	Red
223190-A0	Patch cord Cat6 UTP L. 0,5m	Green
223190-01	Patch cord Cat6 UTP L. 1m	Green
223190-02	Patch cord Cat6 UTP L. 2m	Green
223190-03	Patch cord Cat6 UTP L. 3m	Green
223190-05	Patch cord Cat6 UTP L. 5m	Green
223160-A0	Patch cord Cat6 UTP L. 0,5m	Blue
223160-01	Patch cord Cat6 UTP L. 1m	Blue
223160-02	Patch cord Cat6 UTP L. 2m	Blue
223160-03	Patch cord Cat6 UTP L. 3m	Blue
223160-05	Patch cord Cat6 UTP L. 5m	Blue
223180-A0	Patch cord Cat6 UTP L. 0,5m	Yellow
223180-01	Patch cord Cat6 UTP L. 1m	Yellow

[continue]

[UTP And FTP Cat.6 Patch Cords RJ45-RJ45]

Part Number	Description	Color
223180-02	Patch cord Cat6 UTP L. 2m	Yellow
223180-03	Patch cord Cat6 UTP L. 3m	Yellow
223180-05	Patch cord Cat6 UTP L. 5m	Yellow



## Modular Plugs

All the modular plugs are designated and manufactured with an ISO9001 system. A complete line of the modular plugs for any telecommunications application. Available modular plugs for solid and stranded copper conductor. Most Modular plugs are in stock for immediately ship, special and bulk packages are available and we make quickly on request.



**Features**

- Available Shielded and Un-shielded
- Available Cat 5E and Cat 6
- Field installable
- ROHS Compliant
- Plug cover coloured

Part Number	Description
230110-00	4-ports plug UTP
230110-01	4-ports plug UTP for stiff cable
230113-00	6/4-ports plug UTP
230111-00	6-ports plug UTP
232112-02	8 ports plug UTP for stranded cable Cat 5E
232212-02	8 ports plug FTP for stranded cable Cat 5E
232122-01	8 ports plug UTP for stiff cable Cat 5E
232212-01	8 ports plug FTP for stiff cable Cat 5E
233112-00	8 ports plug/preinsert UTP for flexible cable Cat6
233112-01	8 ports plug UTP for stiff cable Cat 6
233112-02	8 ports plug UTP for stranded cable Cat 6
233212-01	8 ports plug FTP for stiff cable Cat 6
233121-01	8 ports plug FTP for stranded cable Cat 6
252000-06	Plug cover Cat 5E blue
252000-02	Plug cover Cat 5E black
252000-09	Plug cover Cat 5E green
252000-07	Plug cover Cat 5E red
252000-04	Plug cover Cat 5E grey



[continue]

[Modular Plugs]	
Part Number	Description
252000-05	Plug cover Cat 5E orange
252000-08	Plug cover Cat 5E yellow
252000-03	Plug cover Cat 5E white

## Tooling

Part Number	Description
260000-00	Impact tool for telephone connection



Cuts, strips and crimps all kinds of modular plug without changing modular die set. Non-slip with ribbed edge handle. For RJ45 and RJ11 modular plugs terminated

### Features

- 8P8C/RJ-45, 6P6C/RJ-12, 6P4C/ RJ-11, 4P4C&4P2C plugs, 4P2C DEC/OFF SET plug - 6P6C
- Dual and three usages
- Used to cut crimps and strip
- For RJ45 and RJ11 modular plugs terminated
- Non-slip with ribbed edge handle
- Easy to hold

Part Number	Description
261000-00	Professional pincer for 4, 6 and 8/Dec port- plug



A professional pincer use to crimp 4, 6 and 8 pulg . High quality Orca manufactured product.

Part Number	Description
262000-00	Professional pincer for 8 port- plug with interchangeable matrix

The ideal professional pincer is one of the most versatile tools available. It has got a easily interchangeable matrix



Part Number	Description
263000-00	Impact tool with interchangeable blade

Orca impact tool with a free blade. Tested to perform more termination than any tool available. The tool has an ergonomic design.



Part Number	Description
264000-00	5-pair impact tool

The 110 5-pair impact tool is designed to seat connecting blocks and terminate and cut UTP cable on 110 wiring blocks. Saving time and money, it makes large termination jobs small by greatly reducing the number of punch cycles

**Features**

- Ergonomic rubber handle with cushioned grip
- Common handle for 4- and 5- pair heads
- Sharp blades



Part Number	Description
-------------	-------------

265000-00	Analogic LED tester for patch cords RJ45 FTP and UTP
-----------	--



The Orca analogic tester is useful for RJ45 patch cords, can test meanwhile can judge wrong connection, short circuit and open circuit.

Part Number	Description
-------------	-------------

267000-00	Professional digital network tester LCD cat5E and cat6
-----------	--



The professional cabling tester is a powerful tool to prevent and solve cable installation problems. Is the best choice to verify any speech and data cable installation procedure. The tester is capable to have a number of test as cable connection sequence, length, user jumper and cable continuity (and determine any open circuit, short circuit, or jumper). The remote cable tester is a palm-sized unit with 2 RJ45 ports for the testing of today's most popular media. This unit can be used to verify the condition of cables, both before and after their installation. The passive module can be separated for testing the remote end of installed network cabling. The tester is easy to operate and the display gives a clear test result. All instruments are designated and manufactured with an ISO9001 system.

#### Features

- Overall dimension: 180x80x40
- Power Supply: 4x1.5V Size AA
- Display: 4x16 Character LCD Screen
- Cable test type: STP/UTP twisted pairs, coaxial, telephone line
- Tester Port: RJ45 master port, loopback RJ45 port, far-end RJ45 port.
- Calibration cable: > 5m length
- Soft case: included

Part Number	Description
-------------	-------------

268000-00	Phone cable stripper 103S, 22-10 AWG (0,65-2.6mm)
-----------	---

Orca cable stripper

